

**DYNA**  
**FXDB**



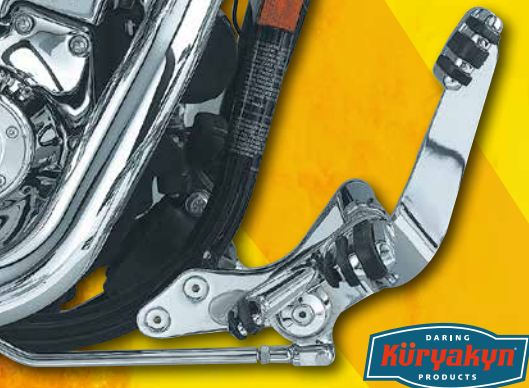
World's Finest Products For Harley-Davidsons



[WWW.CUSTOM-CHROME-EUROPE.COM](http://WWW.CUSTOM-CHROME-EUROPE.COM)







## **Küryakyn Forward Controls for Dyna Models**

These controls offer outstanding good looks, are user-friendly, and provide excellent value in a moderate range. Footpegs not included.

**605182** Standard Forward Controls fits 91-14 Dyna

**605183** Extended Forward Controls fits 91-14 Dyna

Note: Forward Controls are not compatible with most engine Guards and will not fit 08-09 Dyna Fat Bob if equipped with stock exhaust.

CATALOG 'EDITION 44' PAGE 310



## **Tornado Billet & Rubber Foot Pegs**

CNC-Machined from billet aluminum and covered with a knurled black rubber. Available in either a chrome-plated, black anodized or bronze finish.

### **Foot Pegs (sold in pairs)**

**604993** Chrome, Tornado Foot Pegs

**604990** Black, Tornado Foot Pegs

**604978** Bronze, Tornado Foot Pegs

### **Shift Pegs (sold each)**

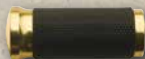
**604992** Chrome, Tornado Shift Peg

**604989** Black, Tornado Shift Peg

**604977** Bronze, Tornado Shift Peg



**604989**



**604977**

CATALOG 'EDITION 44' PAGE 326





## **Performance Machine Contour Handlebar Controls**

### **Contour Hand Control Complete Package**

Complete PM Contour hand control package, includes brake master cylinder (9/16" only), clutch lever (cable or hydraulic) right & left 3 button switches, brake light switch, dual cable throttle housing, clutch side spacer, and even a set of our Contour grips! Will not fit 08-14 FLH models.

- 684342** Complete set with hydraulic clutch, contrast cut
- 684343** Complete set with hydraulic clutch, chrome
- 684344** Complete set with cable clutch, contrast cut
- 684345** Complete set with cable clutch, chrome

### **Contour clutch perch assembly hydraulic clutch**

All PM clutch lever assemblies and clutch master cylinders are CNC machined from billet aluminum. Bore size is 11/16". PM Clutch Master Cylinders now feature a hard anodized bore to eliminate wear. 2007's and up HD's require the use of Starter Interrupt Switch.

- 684334** With clutch master cylinder pre-07 without starter interrupt switch, black
- 684335** With clutch master cylinder pre-07 without starter interrupt switch, chrome
- 684340** With clutch master cylinder 07-14 with starter interrupt switch, black
- 684341** With clutch master cylinder 07-14 with starter interrupt switch, chrome
- 684338** Kill switch, black
- 684339** Kill switch, chrome



## **Arlen Ness Adjustable Handlebars**

### **Features:**

- All bars are drilled and slotted for internal wiring for cable or Fly By Wire applications.
- Drag bars bolt directly to 3-1/2" bolt centers for most HD models (except Bagger models)
- Bagger Apes and Mini Apes include 3 1/2" on center knurling to fit most HD applications
- Available in chrome and black for most HD models

- 618010** H-Bar FLHX, black  
**618014** H-Bar FLHX, chrome  
**618011** H-Bar 10" APE, black  
**618015** H-Bar 10" APE, chrome  
**618012** H-Bar 8" DRAG, black  
**618016** H-Bar 8" DRAG, chrome  
**618013** H-Bar 12" DRAG, black  
**618017** H-Bar 12" DRAG, chrome



## **Chrome 'Plug and Play' Headlights by Namz Cycle Products**

NAMZ "Plug and Play" headlights feature a chrome aluminum housing with clear lens & halogen bulb. They are attached using a chrome mount with a pair of button head screws. NAMZ has pre-wired every headlight with a braided stainless steel wiring harness including factory connectors used on all 96-04 models (Except FL).

### **'Plug and Play' Chrome Headlight**

- 640288** 5 3/4" Headlight  
**640289** 4 1/2" Headlight

## **Side Mount License Plate Holder by Pistor with EG ABE**

Side mount license plate holder system with license plate illumination and all necessary mounting hardware. Comes with E-Approval and fit 180 x 200 mm license plates!

### **For Dyna models**

- 618127** For Dyna models -07, black
- 618128** For Dyna models -07, VA polished
- 618129** For Dyna models 08-14, VA polished

### **For Softail models**

- 618130** For Softail models 00-07, black
- 618131** For Softail models 08-14, black
- 618132** For Softail models -99, black
- 618133** For Softail models 00-07, VA polished
- 618134** For Softail models 08-14, VA polished
- 618135** For Softail models -99, VA polished



### **For V-Rod models**

- 618136** For V-Rod models, black
- 618137** For V-Rod models, VA polished

### **For Sportster models**

- 618138** SML for Sportster models -07, black
- 618139** For Sportster models 08-14, black
- 618140** For Sportster models -07, VA polished
- 618141** For Sportster models 08-14, VA polished



## **TAILLIGHT FUNCTION**

### **LED Taillight/Turn Signal 'Pen Head Double', E-Approved**

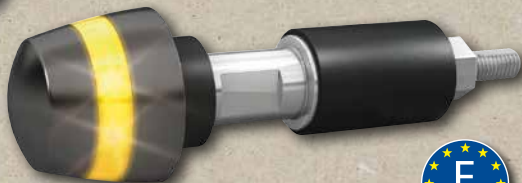
W 47 x H 22 x D 21 mm

**618405** Black metal housing, smoke lens, pair

**618406** Chrome metal housing, clear lens, pair

CATALOG 'EDITION 44' PAGE 5.77

Kellermann 



### **Kellermann BL 2000 Handlebar Turn Signals**

Handlebar turn signals with dark tinted glas. Small and nice solution with high power LED technology. E-approved as turn signal for front use ONLY!

**619761** Kellermann BL 2000 Dark, dark tinted (sold each)

CATALOG 'EDITION 44' PAGE 5.75





### **Eye Shaped Mirror**

Die-cast, polished and chrome-plated. Includes long and short reversible stems for right or left-side use. Includes mounting hardware for all models from 65-14. Sold each.

**111037** Plain back (115x44mm)

CATALOG'EDITION 44' PAGE 4:103

**CANIOX**

**CUSTOM  
CHROME  
EXCLUSIVE**

### **Wannabe-Choppers CANIOX Module for CAN- BUS models**

Since 2011 several HD models are equipped with a CAN-BUS a.k.a. "HD-LAN". This internal communication system restrains certain replacement of components like the handlebar control switches. CANIOX has been developed to overcome this problem and to enable you to use custom handlebar controls e. g. from PM, Rebuffini, Joker Machine, RST or Ness (to name just a few of them). Up to now customizers had to disassemble the OEM CAN-BUS hand control units, remove the original electronic circuit boards and connect them to replacement switches. This has been a time consuming effort which destroyed the OEM hand control units, worth about 800 Euro (Set). It has been a risky job too because a single short-circuit due to a bad soldering of the wires could easily block the whole HD-LAN communication. CANIOX is a self-contained 53 mm x 73 mm x 16 mm small unit with wires of sufficient length to conventionally connect them to the handlebar wire harness. Colour coded wires and an easy but sufficient installation guide are facilitating the mounting of CANIOX. After installation CANIOX receives the switch signals of common handle bar controls and translates them into CAN-BUS messages for the HD-LAN system.

**619871** Caniox modul for HD CAN-Bus models



MORE INFORMATIONS IN OUR CATALOG'EDITION 44'  
PAGE 5:34



### **BSL 'Scale Drager' 96 Header Exhaust System**

The System comes ready to install including brackets. Wanna build a show stopper but you still need a E3 approval (Legal Diffusor disc)...here you go! Fits small air cleaner assemblies only.

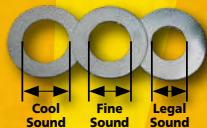
**653538** Polished with polished heat shields

**653539** Black coated with polished heat shields





# SCALE DRAGER SOUNDMASTER SYSTEM



653552



653543



653542



653544

## Scale drager accessory parts to tune up your system

- 653540** BSL Endcap 'Full Sucked', polished
- 653541** BSL Endcap 'Skull Sucked', polished
- 653553** BSL Endcap 'Full Sucked', black coated
- 653554** BSL Endcap 'Skull Sucked', black coated
- 653557** BSL Endcap 'Full Sucked', cast finish
- 653558** BSL Endcap 'Skull Sucked', cast finish
- 653542** BSL screws, smooth (sold each) required 6
- 653543** BSL screws, acorn (sold each) required 6

- 653544** BSL race baffle insert
- 653547** Heat shield ribbed, polished
- 653548** Heat shield ribbed, flat black
- 653549** Heat shield, polished
- 653550** Heat shield, black coated
- 653551** Heat shield skull
- 653555** Soundmaster long
- 653556** Soundmaster standard
- 653552** Diffusor discs (3-pieces)



### **Brackets with Hardware**

- 629300** Fits Big Twins 93-Up (Except 08-Up Touring)
- 629302** Fits EFI XL models 07-Up (requires breather kit)
- 629303** Fits XL models 88-06 (91-Up requires breather kit)
- 629304** 1/2" Wide Spacer for Touring models
- 629305** Bracket with Breather for Touring models 08-Up

### **Replacement Parts**

- 629306** Replacement Filter
- 629326** Black front plate
- 629327** Round 5 3/4" Diameter Stainless Steel Wire Mesh

CATALOG EDITION 44 PAGE 847



### **Custom Skull Air Cleaner**

Available in a show chrome or black finish. Measures approximately 5.5" H x 6.0" W. Support brackets and breather sold separately, fits CV carb and EFI bolt pattern. Matching gas caps available in the sheetmetal section.

- 688235** Skull air cleaner, chrome (except Touring 08-14)
- 688236** Skull air cleaner, black (except Touring 08-14)

CATALOG EDITION 44 PAGE 844





## **ThunderMax ECM with Integrated Auto-Tune System**

Get The Performance Your EFI Equipped Bike Deserves! Would you like to have full control of your EFI system, freedom to make major or minor adjustments without the need for a dyno or a degree in computer technology? Here is a simple solution - ThunderMax with Auto-Tune! The ThunderMax is an industry award winning product that replaces the factory module and is not an add-on box or signal modifier. The ThunderMax is purpose built to deliver uncompromising performance, but you don't have to be an experienced technician to install it, program it, or make adjustments.

Just how easy is it? Installation is a straightforward replacement of the factory module and oxygen sensors. The ThunderMax software contains hundreds of base maps that cover over 80% of popular factory and aftermarket combinations, each dyno-developed on real motorcycles. Choosing a basemap is a quick & easy process thanks to the software's sorting filters; loading a map takes less than a minute. After that you're ready to start the motorcycle, let the bike warm up at idle to operating temperature and you're ready to ride! During your ride, the ThunderMax Auto-Tune system analyzes the air/fuel ratio read by the wide-band oxygen sensors at warp speed after every cylinder fire and makes any necessary adjustments to the injector pulse width to achieve the desired air/fuel ratio while compensating for variations in injectors, fuel pressure, throttle body or exhaust flow. With every tank of fuel, at any temperature or elevation, your engine's tune is optimized by ThunderMax.

Simply put, ThunderMax is the most advanced, yet user friendly, performance engine management system you can buy for your Harley. Using the supplied ThunderMax software and communication cable allows you to adjust and monitor virtually every parameter in the system. Installation and How-To Videos are available on-line (You-Tube – ThunderMaxAV).

**645554** ThunderMax ECM with Integrated Auto-Tune System (18 mm Lampda) Fits 12-14 Softail (FXST), Dyna (FXD) Models





684379



684375



684377



### **Performance Machine Contour Hydraulic Clutch Slave Housings**

The PM Clutch Slave Cylinder is perfectly matched to the bore size of our Contour Master Cylinder for optimal clutch action. Left Side Drive housing includes dipstick. DOT4/DOT5.

- 684374** 5-speed smooth housing, black
- 684375** 5-speed smooth housing, chrome
- 684376** 5-speed fluted housing, black
- 684377** 5-speed fluted housing, chrome
- 684378** 6 Speed fluted housing for HD ONLY 07-14, black
- 684379** 6 Speed fluted housing for HD ONLY 07-14, chrome



697135



697136



697132



697130



697142



697131



## 2 Inch Open Belt Drive for Softails with Motor Plate

BDL's new 2" belt drives feature their beefy one piece 6061-T6 polished billet motor plate, their new shorty starter housing and starter gear cover and their new side guard. These also include BDL's ball bearing lock up clutch.

- 697130** Polished fits all Softails 90-06
- 697131** Black fits all Softails 90-06
- 697132** Clear Anodized fits all Softails 90-06
- 697135** Polished fits all Softails 07-Up (except FXCW/C)
- 697136** Black fits all Softails 07-Up (except FXCW/C)



MADE IN THE USA



CUSTOM  
CHROME  
EXCLUSIVE



### RevTech Billet Wheels - Super Charger

Size	Super Charger
18" x 8.50"	<b>602877</b>
13" x 3.50"	<b>602882</b>

CATALOG 'EDITION 44' PAGE 13:10

### RevTech Chrome and Black Anodized Billet Front Wheel Hubs

Year	Dyna Models	Axle Size	Chrome
08-Up	FXD/FXDL/FXDB/FXDC Models, Single Disc	25mm	<b>602474</b>

### RevTech Chrome and Black Anodized Billet Rear Wheel Hubs

Year	Custom Wide Tire Applications	Axle Size	Chrome
00-Up	18x8.50 Wheel for custom application for 240/250 wide drive frames, 1" axle	1"	<b>602947</b>

CATALOG 'EDITION 44' PAGE 13:24 & 13:25



# **AVON** TYRES

## **Cobra AV71/AV72**

- Densely wrapped belt in center for stability, wear, and mileage; less dense on shoulders for huge, compliant contact patch
- Consistent handling and stability for the full life of the tire
- Snakeskin Sidewall Effect
- Tread gives optimal water dispersal
- Design reduces flex for improved grip and stability

### **Cobra AV71... Front**

**1011263** 130/60VR-23" (65V) Blackwall

### **Cobra AV72... Rear**

**1011274** 240/40VR-18" (79V) Blackwall





MADE IN THE USA



CUSTOM CHROME EXCLUSIVE



Year	FLST Softail Models	Width	Tooth	Super Charger Chrome	Pulley Spacer
07-13	FLSTF Fatboy Models w/ 200 tire*	20mm	66-Tooth	602889 *	603749

\* These models require an additional pulley spacer (sold separately) for proper installation.

CATALOG EDITION 44 PAGE 1331



## Performance Machine 4 Piston Calipers



PM has created a new 4 piston billet aluminum caliper specifically engineered for 08-09

HD FL models as well as 06-09 HD VRSC models utilizing the stock brake master cylinder. These HD models utilize a smaller 15mm piston in the brake master

cylinder which requires the use of a smaller volume caliper. This PM 4 piston caliper uses PM's proven caliper design standards to optimize the braking performance on these specific HD models. Customers who opt for the PM 4 or 6 piston differential bore calipers must upgrade to an 11/16" brake master cylinder for optimal performance. PM does not recommend using the stock HD 15mm brake master cylinder with the PM 4 or 6 piston differential bore calipers.

### Left side caliper

**684267** For 300 mm brake rotors, contrast cut, no Approval

**684268** For 300 mm brake rotors, chrome, no Approval

### Right side caliper

**684269** For 300 mm brake rotors, contrast cut, no Approval

**684270** For 300 mm brake rotors, chrome, no Approval  
CATALOG EDITION 44 PAGE 1378



## RevTech 2-pc Brake Rotors

The latest from The RevTech Billet Wheel line, 2-pc brake rotors. A perfect match for to any of our RevTech billet wheels.They feature a universal design that allows them to fit both pre-00 as well as 00-13 models. The disc carrier's are machined from billet aluminum and bolted to a high quality 420 stainless steel outer band that will not gaul or squeal like lesser quality discs. Available with either a chrome-plated or black anodized 'midnight' series center carrier. Made in the U.S.A.



**SUPERCHARGER**

**11.5" Diameter fit the rear of all Big Twin 81-14 & Sportster 81-14 with original 11.5" rear disc (except 81-99 & 08-Up Touring Models)**

<b>Chrome</b>	<b>Left</b>
Super Charger, Chrome	<b>602931</b>

**11.8" diameter front fits all single or dual disc 06-Up Dyna & 08-Up Touring models**

<b>Chrome</b>	<b>Left</b>
Super Charger, Chrome	<b>602932</b>



### **Dyna 240 Swingarm Kit by Fred Kodlin**

Solid wide end swingarm kit, designed for all HD Dyna models, fits „Street Bob“, „Fat Bob“ and other Dynas. Allows the use of 240 rear tires without offset-kit (only modification necessary: Shortening of the right OEM brake caliper bracket by 10 mm, 133 tooth Belt with 20 mm width required). Advanced chromed 3D design belt tensioners at the end of the swingarm. The paintwork is protected by metal inserts, thus offering perfect function and long lasting clean look. Comes raw finish.1“ axle.

**683456** For Dyna models 00-06

**683457** For Dyna models 06-13

CATALOG 'EDITION 44' PAGE 14.11



### **Performance Fork Springs by Progressive Suspension**

Progressively-wound springs are made using the finest spring material with a Manufacturer's Lifetime Warranty. They eliminate sag, reduce nose dive under braking, improve stability and increase ride comfort.

### **Fork Lowering Kits**

An easy and inexpensive way to drop the front end of your bike one or two inches. Includes progressively-wound fork springs, spacers, and lowering components.

**680089** Fits all 49mm forks on FXD/B/L/C/WG/35 models from 06-Up

CATALOG 'EDITION 44' PAGE 15.33





## **Polished JOS EASY2 Triple Tree with Full Covers**

**Fits HD XL / FXR / FXD models**

- 250mm wide
- 0° rake
- Fully 360° rake covers for the forkleg between the triple trees

No disconnecting of wires and brake lines because of the Easy2 system

**683376** JOS „EASY2“ Triple tree with full covers HD39 0° rake FXD 04-05

**683377** JOS „EASY2“ Triple tree with full covers HD49 0° rake FXD Street Bob 06-07

**Fits HD FXST models**

- 250 mm wide
- 0° rake
- Fully 360° rake covers for the forkleg between the triple trees

No disconnecting of wires and brake lines because of the Easy2 system. Fork sliders needs to be milled down to 62mm.

**683378** JOS „EASY2“ Triple tree with full covers HD41,2 0° rake FXST 84-99

**683379** JOS „EASY2“ Triple tree with full covers HD41,2 0° rake FXST 00-13

## Legend Air L1, D1, V1 Suspension Kits

- Fits Harley-Davidson Touring, Dyna, and V-Rod models
- Exclusive Kevlar Air Spring technology
- L1 & D1 adjust from stock height 13" down 3 1/4"; V1 adjust from stock height 13" down 2 1/2"
- Deflective disc damping offers smooth ride and eliminates annoying pogo
- CNC machined from 6060-T6 and 2011 aluminum
- Suspension systems installs in stock location, no modifications necessary
- Systems includes rider friendly black handlebar mounted control for easy "on the go" adjustability, on-board air compressor solenoid valve and all necessary hardware
- Easy color coded plug and play wiring allows for a quick and easy installation
- NEW Upgrade for chrome Harley-Davidson hand controls available separately.
- NEW Upgrade fairing mounted gauge & bezel for both FL and Road Glide models
- Unlimited one year warranty
- MADE IN THE USA

### For 99-14 Dyna models (D1 Series) \*

**697112** Black D1

**697113** Chrome D1

The Approval is only valid when one of the pressure gauges (697119 & 697127) is mounted. Mounting brackets by Pistor can be found in section 17!





★ DYNA ★



### **Dyna 06-14 Fender for 240 Tire by Fred Kodlin**

A superb fender option for your Dyna model: Designed for Harley-Davidson's popular Street Bob, this fender offers smooth lines and is literally „bolt on“ for a spectacular look. Integrated fender struts for superb strength with a short-cut rear end that supports both „old school“ and „performance“ styles. Serves rear tire sizes of up to 240 and works great with Fred Kodlin Dyna swingarm kit (CCE 685705) and Street Bob tank cover (CCE 685706). Fender comes raw finish.

**685704** 240 Fender kit

CATALOG EDITION 44 PAGE 16/07



654183



654009

### **Arlen Ness Wrapper Front Fenders for Touring Models**

These fenders wrap perfectly around that 23" or 26" custom wheel on your Bagger. They are a direct bolt-on for 87-14 Touring models and no fender spacers are required. Available in a Carbon Composite or Fiberglass construction.

#### **For all 2014 Touring models**

**654183** 26 inch Wrapper front fender, Carbon composite

**654182** 23 inch Wrapper front fender, Carbon composite

#### **For all 87-13 Touring models**

**654081** 26 inch Wrapper front fender, Composite

**654009** 23 inch Wrapper front fender, Fiberglass

CATALOG EDITION 44 PAGE 16/19

**BOLT ON**



**AND RIDE**



World's Finest Products For Harley-Davidsons

Custom Chrome Europe GmbH  
Carl-von-Ossietzky-Straße 8  
55459 Grolsheim/Germany

Phone: +49 (0) 6721 - 4 007 - 0

Fax: +49 (0) 6721 - 4 007 - 100

e-mail: [info@customchrome.de](mailto:info@customchrome.de)

[www.custom-chrome-europe.com](http://www.custom-chrome-europe.com)