

BLACKLINE
BEAUTY



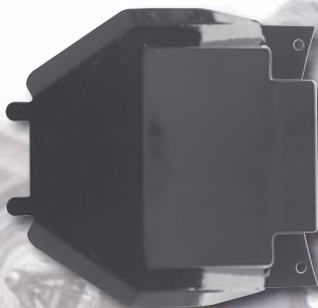
World's Finest Products For Harley-Davidsons



Slimline Solo Seat

Here ya go, the thinnest, baddest looking solo seats you're ever going to find for your retro ride! These seats have about 1/2" of padding giving an extremely low profile, and flipped up in the back for support and to keep you from sliding off when you give it the gas! The narrow versions measure 11 1/2" long X 9 1/2" wide while the wide versions measure 13" long X 11 1/2" wide. Constructed with a formed steel base that won't crack like fiberglass bases, and covered with a high quality naugahyde that will last for years! Seats mount to any frame using seat springs and appropriate mounting brackets that are also available in this section of the handbook. Look great when used along with our matching colored grips, kicker pedals, floorboard mats and solo saddlebags!

- 632115** Slimline Solo Seat - Narrow - Black
- 632116** Slimline Solo Seat - Narrow - White
- 632117** Slimline Solo Seat - Narrow - Red
- 632127** Slimline Solo Seat - Wide - Black
- 632128** Slimline Solo Seat - Wide - White
- 632129** Slimline Solo Seat - Wide - Red



683814



683815

ORIGINAL
THUNDERBIKE
CUSTOMS

Thunderbike Solo Seat Brackets

Complete Kit (except seat springs) including mounting kit. The installation on the injection Softail models requires relocation of the ECM and fusebox!

683813 Solo Seat Bracket Twin Cam

683814 Solo Seat Bracket Rocker

683815 Solo Seat Bracket Dyna



651841



12393

Rectangular Mirror

Mirror head measures 2" x 4 1/4". Comes complete with mounting hardware. Sold each.

12393 Chrome, Rectangular mirror

651841 Black, Rectangular mirror



632222



632223



Jammer Dog Bone Inline Triple Clamp

Just what you need to use with our Dog Bone risers to mount 1" handlebars to our springers that use an "inline" triple clamp. A very retro, very cool look! A stud kit is also available to thread into the unused riser stud holes on springers when using dog bone risers. A trick little idea that really cleans things up! Made in USA by Paughco.

632222 Dog Bone inline triple clamp (with ears)

632223 Kit for riser stud holes when using dog bone risers



Jammer Hollywood and Speedster Handlebars for Springers

Those of you familiar with old iron will remember these handlebars used on 36-57 models. Originally designed to use piano wire style internal throttle and spark advance cables, we've updated them for use with pre-82 controls and fitment to our Jammer or other aftermarket "inline" Springer front ends. Simply remove the top tree and install the bars in its place... instant Cool! Both styles are made of 1" tubing, are undimpled, measure 36" from tip to tip, have a 6" rise and feature cable exit holes for those using our internal clutch and throttle assemblies shown elsewhere. The "Hollywood" handlebars feature the crossbar while the "Speedster" handlebars do not. Both styles are truly retro inspired, and available either black powder coated or chrome-plated. The "Hollywood" style bars are featured on our "Delta 88" build. Made exclusively for Jammer right here in USA by Paughco.

632365 "Hollywood" bars for Springer-Chrome

632366 "Hollywood" bars for Springer-Black

632369 "Speedster" bars for Springers-Chrome

632370 "Speedster" bars for Springers-Black



684343



Performance Machine Contour Handlebar Controls

Contour Hand Control Complete Package

Complete PM Contour hand control package, includes brake master cylinder (9/16" only), clutch lever (cable or hydraulic) right & left 3 button switches, brake light switch, dual cable throttle housing, clutch side spacer, and even a set of our Contour grips! Will not fit 08-09 FLH models.

684342 Complete set with hydraulic clutch, contrast cut

684343 Complete set with hydraulic clutch, chrome

684344 Complete set with cable clutch, contrast cut

684345 Complete set with cable clutch, chrome

PM's Contour machined brake master cylinder is a thing of beauty! The gracefully curved one piece body, and refined internals represent the very best in CNC artwork.

Contour handlebar brake master cylinder

Optional brake light switch can be ordered separately. Designed with the custom builder in mind, billet aluminum has never looked so good!

684328 9/16" bore (single caliper), contrast cut

684329 9/16" bore (single caliper), chrome

684332 11/16" bore (dual caliper), contrast cut

684333 11/16" bore (dual caliper), chrome

684330 Brake light switch 9/16" bore (single caliper), includes 36" Wire leads, black

684331 Brake light switch 9/16" bore (single caliper), includes 36" Wire leads, chrome

684336 Brake light switch 11/16" bore (dual caliper), includes 36" Wire leads, black

684337 Brake light switch 11/16" bore (dual caliper), includes 36" Wire leads, chrome



684299

Replacement levers

For hydraulic control units only

- 684296 Replacement brake lever short, black
- 684297 Replacement brake lever short, chrome
- 684298 Replacement clutch lever short, black
- 684299 Replacement clutch lever short, chrome

Contour clutch perch assembly (cable)

The PM Contour Clutch Lever and perch are perfectly matched to our master cylinder and switches. Works with stock cable. Will not work with HD switch housing.

- 684302 Early models, black
- 684303 Early models, chrome
- 684300 84-06 models, black
- 684301 84-06 models, chrome
- 684326 Fits models 07-10 w/ starter interrupt switch included, black
- 684327 Fits models 07-10 w/ starter interrupt switch included, chrome

684301

Contour clutch perch assembly hydraulic clutch

All PM clutch lever assemblies and clutch master cylinders are CNC machined from billet aluminum. Bore size is 11/16". PM Clutch Master Cylinders now feature a hard anodized bore to eliminate wear. 2007's and up HD's require the use of Starter Interrupt Switch.

- 684334 With clutch master cylinder pre-07 without starter interrupt switch, black
- 684335 With clutch master cylinder pre-07 without starter interrupt switch, chrome
- 684340 With clutch master cylinder 07-11 with starter interrupt switch, black
- 684341 With clutch master cylinder 07-11 with starter interrupt switch, chrome
- 684338 Kill switch, black
- 684339 Kill switch, chrome



684307



684448



Contour switch housings

PM's Billet Aluminum Switch Housings are a perfect compliment to the PM Contour Master Cylinders. Available as single button or three button switch units. Includes high quality switches with 36" leads. Retains blinkers, horn and high beam switches. Can be wired traditionally or hidden inside handlebars.

Contour single button switch

684306 Right Side, black

684307 Right Side, chrome

684310 Left side, black

684313 Left side, chrome

Contour three button switch

684447 Right Side, black

684448 Right Side, chrome

684304 Left Side - use with hydraulic clutch, black

684305 Left Side - use with hydraulic clutch, chrome

684308 Left side - use with cable clutch, black

684309 Left side - use with cable clutch, chrome



Contour FL switch housings

The popularity of on-board audio systems prompted us to offer our Contour switches with a matched audio housing. Now, even baggers with tunes can upgrade to the PM Contour hand Controls (options include, 9/16" or 11/16" master cylinders, cable or hydraulic clutch, throttle housing and matched grips) without sacrificing the convenience of having stereo and cruise control switches within reach. The PM Touring Edition Switch Housing utilizes the OEM stereo and cruise control switches for a simple install and ease of use.

684319

- 684314** Four button switch right side, black
- 684315** Four button switch right side, chrome
- 684316** Four button switch left side, black
- 684317** Four button switch left side, chrome
- 684322** Four button switch left side (cable clutch), black
- 684323** Four button switch left side (cable clutch), chrome
- 684318** Five button switch right side, black
- 684319** Five button switch right side, chrome
- 684320** Five button switch left side, black
- 684321** Five button switch left side, chrome
- 684324** Five button switch left side (cable clutch), black
- 684325** Five button switch left side (cable clutch), chrome

Contour throttle housings

It's hard to believe such a small part could make or break the look of your hand controls, but gloppy throttle housings have ruined the look of a fair share of bikes. We don't want this to happen to you, so we created the Contour housing, designed to perfectly match our Contour master cylinder and switches. Available in single cable, dual cable and dual cable snap in.

- 684346** Single cable throttle housing threaded hole, black
- 684347** Single cable throttle housing threaded hole, chrome
- 684348** Dual cable throttle housing threaded hole, black
- 684349** Dual cable throttle housing threaded hole, chrome
- 684350** Dual cable throttle housing - snap in cable, black
- 684351** Dual cable throttle housing - snap in cable, chrome



Internal Throttle Assembly

Ingenious design completely eliminates the throttle pipe and housing. Converts the end of the handlebar into a single cable throttle. The throttle cable is routed through the bar so all components are hidden from view. For custom motorcycles only. Requires cutting 3.94" off of the right bar end to install.

12815 Fits 1"-diameter handlebars



Est. 1970

Chrome Headlight Lowering Bracket

Lowers the headlight 2 1/2" on late 88-92 Springer Softail models.

18026 Sold each



**ORIGINAL
THUNDERBIKE
CUSTOMS**



683816



652971



652975



652979



652972

Thunderbike Side Mount License Plate Brackets "Long" & "Short"

The "Long" version comes approved! Please order the license plates separately (683843-683850)

683816 Side mount "Long" for Softails 00-07

683817 Side mount "Long" for Softails 08-12

683818 Side mount "Short" for Softails 00-07

683819 Side mount "Short" for Softails 08-12

683832 Side mount "Long" for Rocker

683833 Side mount "Short" for Rocker

683834 Side mount "Long" for V-Rod

683835 Side mount "Short" for V-Rod

683836 Side mount "Long" for Dyna 06-07

683837 Side mount "Long" for Dyna 08-12

683838 Side mount "Short" for Dyna 06-07

683839 Side mount "Short" for Dyna 08-12

683840 Side mount "Long" for XL 04-12

683841 Side mount "Short" for XL 04-12

683842 Side mount "Long" for XL 91-03

683861 Side mount "Short" for XL 91-03

652967 Side Mount Long S/T 00-07 black

652968 Side Mount Long S/T 08-12 black

652969 Side Mount Short S/T 00-07 black

652970 Side Mount Short S/T 08-12 black

652971 Side Mount Long Rocker black

652972 Side Mount Short Rocker black

652973 Side Mount Long V-Rod black

652974 Side Mount Short V-Rod black

652975 Side Mount Long Dyna 06-07 black

652976 Side Mount Long Dyna 08-12 black

652977 Side Mount Short Dyna 06-07 black

652978 Side Mount Short Dyna 08-12 black

652979 Side Mount Long XL 04-12 black

652980 Side Mount Short XL 04-12 black

652981 Side Mount Long XL 91-03 black

652982 Side Mount Short XL 91-03 black



ORIGINAL
THUNDERBIKE
CUSTOMS



Inside License Plate Holder by Thunderbike

CNC machined from Billet aluminum, polished or powder-coated black. With holes for wiring harness (invisible mounting, frame system). For combination with our side mount license plate brackets and taillights. Available in black, flat black or polished in most common and country specific sizes.

- 653007** 18x20 cm, polished
- 653008** 18x20 cm, black
- 653009** 18x20 cm, flat black
- 653010** 20x20 cm, polished
- 653011** 20x20 cm, black
- 653012** 20x20 cm, flat black
- 653013** 22x20 cm, polished
- 653014** 22x20 cm, black
- 653015** 22x20 cm, flat black
- 653016** 24x20 cm, polished
- 653017** 24x20 cm, black
- 653018** 24x20 cm, flat black
- 653019** Netherland, polished (21x14,3 cm)
- 653020** Netherland, black (21x14,3 cm)
- 653021** Netherland, flat black (21x14,3 cm)
- 653022** Austria, polished (21x17 cm)
- 653023** Austria, black (21x17 cm)
- 653024** Austria, flat black (21x17 cm)
- 653027** Norway, polished (22x15 cm)
- 653028** Norway, black (22x15 cm)
- 653029** Norway, flat black (22x15 cm)
- 653030** Denmark, polished (24x16,5 cm)
- 653031** Denmark, black (24x16,5 cm)
- 653032** Denmark, flat black (24x16,5 cm)
- 653033** Belgium, polished (14x17,4 cm)
- 653034** Belgium, black (14x17,4 cm)
- 653035** Belgium, flat black (14x17,4 cm)
- 653036** Switzerland, polished (18x14 cm)
- 653037** Switzerland, black (18x14 cm)
- 653038** Switzerland, flat black (18x14 cm)
- 653039** Sweden, polished (19,5x15,5 cm)
- 653040** Sweden, black (19,5x15,5 cm)
- 653041** Sweden, flat black (19,5x15,5 cm)





653042



653048



653045



653044



653049



653051



653046



653053

ORIGINAL
THUNDERBIKE
CUSTOMS

Taillight for Inside plates by Thunderbike

The perfect combination to Thunderbikes inside license plate program. Available in polished, black or flat black version.

Taillights

- 653042** Taillight Alcatraz, polished
- 653043** Taillight Alcatraz, black
- 653044** Taillight Alcatraz, flat black
- 653045** Taillight Bullet, polished
- 653046** Taillight Bullet, black
- 653047** Taillight Bullet, flat black
- 653048** Taillight Pyramid, polished
- 653049** Taillight Pyramid, black
- 653050** Taillight Pyramid, flat black

License plate illumination

- 653051** License plate light, polished
- 653052** License plate light, black
- 653053** License plate light, flat black



LED

Bates Style LED Taillight, E Approved

Stylish little 57 mm ø taillight (lens ø 48 mm) with tinted lens and adjustable bracket. Mounting holes need to be drilled (distance 15 mm).

652789 Bates style LED taillight with E approval, Black, smoked lens

653390 Bates style LED taillight with E approval, chrome, red lens

653391 Bates style LED taillight with E approval, chrome, smoked lens

653392 Bates style LED taillight with E approval, black, red lens

685458



683625

LED



LED PEN HEAD Indicator

SINGLE-LED (13 watt) turn signal PEN HEAD, black aluminium housing, E-marked, Head dimensions l/w/d: 34x22,5x20mm Stem length: 14,5mm, M8 bolt

683625 Black, sold in pairs

685458 Chrome LED-indicator



BSL E3-approved Top Chop Staggered Exhaust Systems

696482 BSL TOP CHOP STAG. E3-approved exhaust system 70 mm stainless steel, polished

696483 BSL TOP CHOP STAG. E3-approved exhaust system 70 mm stainless steel, chrome.

696484 BSL TOP CHOP STAG. E3-approved exhaust system 70 mm stainless steel, black coated

Note: Polished Cut Style end caps are included



RevTech DFO

Optimize your fuel injection without the need for expensive dyno tuning! Developed by Mark Dobeck, the inventor of the original Jet Kit, the DFO allows you to quickly dial in your engine's fuel delivery, whether on a stock bike, or with freer flowing air filter and/or exhaust added. Installation takes less than an hour, and adjustments are made by the simple turn of a screwdriver. A little experimentation produces results you can feel, whether simply removing a lean hiccup or flat spot on your stock bike or maximizing the effect of your aftermarket exhaust. Simple screwdriver dial-in. Provides crisper throttle response. Three range adjustable fuel delivery curve. Compact size, only 3 1/2" x 1 1/2" x 3/4", allows convenient mounting. Simple, reliable, and excellent for expert mechanics or do-it-yourselfers! New DFO HP provides additional tuning capabilities for highly modified engines.

RevTech Stealth DFO for 06-11 Big Twins

601206 Stealth DFO for 06 Big Twins (except Dyna Glide models)

601208 Stealth DFO for 06-11 Dyna Glide, 07-11 Softail, 07 Touring models

RevTech Stealth DFO HP for 06-11 Big Twins

The Stealth DFO HP has OEM-style connectors for an effortless installation and allows for more fuel to be added for applications with 95" or more of displacement. Its stealth technology is required on 06-11 Big Twins.

601207 Stealth DFO HP for 06 Big Twins (except Dyna Glide models)

601209 Stealth DFO HP for 06-11 Dyna Glide, 07-11 Softail, 07 Touring models

RevTech Stealth DFO for 95-05 Big Twins

The Stealth DFO has OEM-style connectors for an effortless installation. Its stealth technology is required on 05 Big Twins.

601203 Stealth DFO for 95-05 Big Twins

RevTech Stealth DFO HP for 95-05 Big Twins

The Stealth DFO HP has OEM-style connectors for an effortless installation and allows for more fuel to be added for applications with 85 or more horsepower. Its stealth technology is required on 05 Big Twins.

601205 Stealth DFO HP for 95-05 Big Twins



601203

RevTech Stealth DFO for 02-07 V-Rod Models

The Stealth DFO has OEM-style connectors for an effortless installation. Its stealth technology is required on 05 V-Rod models.

601204 Stealth DFO for 02-07 V-Rod models

RevTech Stealth DFO for 07-12 Sportster Models

The Stealth DFO has OEM-style connectors for an effortless installation.

601197 Stealth DFO for 07-12 Sportster models

RevTech Stealth DFO HP for 07-12 Sportster Models

The Stealth DFO HP has OEM-style connectors for an effortless installation and allows for more fuel to be added for applications with high-compression engines putting out 90 or more horsepower.

601198 Stealth DFO HP for 07-12 Sportster models

RevTech Stealth DFO for 08-09 Touring Models

601888 Stealth DFO for Touring models 08-09

RevTech Stealth DFO for 08-09 Touring Models

The Stealth DFO HP has OEM-style connectors for an effortless installation. Allows for more fuel to be added for applications with high-compression/high horse power engines.

601889 Stealth DFO HP for Touring Models 08-09

RevTech Stealth DFO for 08-11 V-Rod models

The Stealth DFO has OEM-style connectors for an effortless installation.

601890 Stealth DFO for V-Rod models 08-11

★ REVTECH DIGITAL FUEL OPTIMIZER ★



Rev Tech DFO Generation 3.5 Adjustable Fuel Injection Tuner

A load-based fuel injection module that is a direct plug-in unit and does not require any splicing or modifications to your motorcycle wire harness during installation. DFO modules come pre-loaded with base maps for different models which can then be fine tuned for each individual's riding style and bike with three buttons. Tuning is so easy that laptops and dynos are not required to maximize your motorcycle's performance. The DFO Gen 3.5 detects the exact amount of load on the engine at any RPM and any road speed and delivers the perfect amount of fuel to the engine for optimum performance.

601841 Fits 06 fuel-injected Softail and Touring models

601842 Fits 06 Dyna Glide models

601844 Fits 07-12 Sportster models

601845 Fits all 07-11 Big Twin models (Except 08- Touring)

601846 Fits all 08-09 FLHT / FLTR Models

601848 Fits all 10-12 FLHT/FLTR Models

601843 Fits all 02-07 V-Rod Models

601847 Fits all 08-11 V-Rod Models



ORIGINAL
THUNDERBIKE
CUSTOMS

Thunderbike Breather Brackets

Billet aluminum breather bracket in black wrinkle finish for Twin Cam and Evolution engines with internal crankcase breather.

652987 TB Breather bracket, EVO

652993 TB Breather bracket, TC



ZCB CUSTOM PARTS
PERFORMANCE CUSTOM PARTS

Stainless Steel Upper Belt Guards by ZCB

Show off more of your pulley with these polished stainless steel upper belt guard. They fit all Evolution and Twin Cam 88 Softail models.

86670 Fits models with 65 tooth rear pulleys, polished

86671 Fits models with 65 tooth rear pulleys, black



'RevPro'

'Scorpion'

'Meridian'

'Inferno'

**CUSTOM
CHROME
EXCLUSIVE**



'Dominator 6'

'Nitro 18'

'Eliminator 7'

**REVTECH
WHEELS**

RevTech Belt Pulleys

Year	Touring Models	Width	Tooth	Nitro 18	Dominator 6	Dominator 6 'Midnight Series'	Eliminator 7
07	FLHT/FLHR/FLTR Models	1"	66-Tooth	603702	603707	603760	603712
04-06	FLHT/FLHR/FLTR Models	1 1/8"	70-Tooth	603701	603706	603759	603711
00-03	FLHT/FLHR/FLTR Models	1 1/2"	70-Tooth	603700	603705	603758	603710
84-99	FLHT/FLHR/FLTR Models	1 1/2"	70-Tooth	603684	603669	603763	603699
84-99	FLHT/FLHR/FLTR Models	1 1/2"	65-Tooth	603683	603668	603764	603698
Year	FLST Softtail Models	Width	Tooth	Nitro 18	Dominator 6	Dominator 6 'Midnight Series'	Eliminator 7
07-09	FLST Models with 150 tire*	1"	66-Tooth	603702 *	603707 *	603760 *	603712 *
07-09	FLST Fatboy Models with 200 tire*	20 mm	66-Tooth	603704 *	603709 *	603762 *	603714 *
00-06	FLST Models	1 1/8"	70-Tooth	603682	603667	603765	603697
84-99	FLST Models	1 1/2"	70-Tooth	603684	603669	603763	603699
84-99	FLST Models	1 1/2"	65-Tooth	603683	603668	603764	603698
07-09	FXST Models with 200 tire	20 mm	66-Tooth	603704 *	603709 *	603762 *	603714 *
08-09	FXCWC Models*	20 mm	66-Tooth	603704 *	603709 *	603762 *	603714 *
06	FXST Models with 200 tire	20mm	70-Tooth	603703	603708	603761	603713
00-05	FXST Models with 150 tire	1 1/8"	70-Tooth	603682	603667	603765	603697
84-99	FXST Models	1 1/2"	70-Tooth	603684	603669	603763	603699
84-99	FXST Models	1 1/2"	65-Tooth	603683	603668	603764	603698
Year	Dyna Models	Width	Tooth	Nitro 18	Dominator 6	Dominator 6 'Midnight Series'	Eliminator 7
07-09	All FXD Models*	1"	66-Tooth	603702 *	603707 *	603760 *	603712 *
00-06	All FXD Models	1 1/8"	70-Tooth	603682	603667	603675	603697
84-99	All FXD Models	1 1/2"	70-Tooth	603684	603669	603763	603699
84-99	All FXD Models	1 1/2"	65-Tooth	603683	603668	603764	603698
Year	FXR Models	Width	Tooth	Nitro 18	Dominator 6	Dominator 6 'Midnight Series'	Eliminator 7
00-11	All FXR Models	1 1/8"	70-Tooth	603682	603667	603675	603697
84-99	All FXR Models	1 1/2"	70-Tooth	603684	603669	603763	603699
84-99	All FXR Models	1 1/2"	65-Tooth	603683	603668	603764	603698

* These models require an additional pulley spacer (sold separately) for proper installation.

RevTech Chain Sprockets

	Tooth	Nitro 18	Dominator 6	Dominator 6 'Midnight Series'	Eliminator 7
RevTech sprockets are left side, flat & drilled for OEM HD bolt pattern with a 2.22 i.d. register for 00-10 applications and include a 1.985 reducer ring for installation on 84-99 applications. Machined from aircraft grade 7075 T6 aluminum and designed for use with 530 chain. Fit all models from 84-10.					
	48-Tooth	603735	603737	603785	603739
	51-Tooth	603736	603738	603786	603740

697136



697130



697131



697135



697132



697142



2 Inch Open Belt Drive for Softails with Motor Plate

BDL's new 2" belt drives feature their beefy one piece 6061-T6 polished billet motor plate, their new shorty starter housing and starter gear cover and their new side guard. These also include BDL's ball bearing lock up clutch.

697130 Polished fits all Softails 90-06

697131 Black fits all Softails 90-06

697132 Clear Anodized fits all Softails 90-06

697135 Polished fits all Softails 07-12 (except Rocker)

697136 Black fits all Softails 07-12 (except Rocker)

697137 Clear Anodized fits all Softails 07-12 (except Rocker)



RevTech Billet Wheels - Nitro 18

Size	Nitro 18	Size	Nitro 18
16" x 3.50"	602675	18" x 8.50"	602680
16" x 5.00"	602684	19" x 2.15"	602688
17" x 3.50"	602685	19" x 3.00"	602689
17" x 6.25"	602686	21" x 2.15"	602682
18" x 3.50"	602677	21" x 3.50"	602683
18" x 4.25"	602687	23" x 3.50"	602706
18" x 5.50"	602679		

RevTech One-Piece Chrome Brake Rotors

Fit the Front of all Single and Dual Disc Dyna Models from 06-11 and Touring Models from 08-11 11.8" Diameter

Left	Right	Design
602921	602921	Nitro 18

Fit the Rear of all Touring Models from 08-11 11.8" Diameter

602922	Nitro 18
--------	----------

Fit the Front of all Single and Dual Disc Models (except Buell, V-Rod, 06-11 Dyna and 08-11 Touring Models) from 84-11 11.5" Diameter

602923	602923	Nitro 18
--------	--------	----------

Fit the Rear of all Big Twin and Sportster Models from 81-11 (except 81-99 & 08-11 Touring Models) 11.5" Diameter

602924	Nitro 18
--------	----------

RevTech One Piece Polished Brake Rotors

Fit the Front of all Single and Dual Disc Dyna Models from 06-11 and Touring Models from 08-11 11.8" Diameter

603677	603677	Nitro 18
--------	--------	----------

Fit the Rear of all Touring Models from 08-11 11.8" Diameter

603678	Nitro 18
--------	----------

Fit the Front of all Single and Dual Disc Models (except Buell, V-Rod, 06-11 Dyna and 08-11 Touring Models) from 84-11 11.5" Diameter

603675	603675	Nitro 18
--------	--------	----------

Fit the Rear of all Big Twin and Sportster Models from 81-11 (except 81-99 & 08-11 Touring Models) 11.5" Diameter

M602675	603676	Nitro 18
---------	--------	----------

RevTech Chrome and Black Anodized Billet Front Wheel Hubs				
Year	Touring Models	Axle Size	Chrome	Black Anodized
08-12	All Touring Models with ABS, Dual Disc	25mm	602467	602500
08-12	All Touring Models without ABS, Dual Disc	25mm	602468	602501
08-12	All Touring Models with ABS, Single Disc	25mm	602469	602502
08-12	All Touring Models without ABS, Single Disc	25mm	602470	602503
00-07	All Touring Models, Dual Disc	1"	602959	602529
00-07	All Touring Models, Single Disc	1"	602471	602496
87-99	All Touring Models, Dual Disc	3/4"	602956	602552
Year	Softail Models	Axle Size	Chrome	Black
11-12	FLST Models with ABS, Single Disc	25mm	602965	602966
07-10	FLST Models (except FLST5 & FLSTF), Single Disc	25mm	602480	602513
07	FLSTF Models, Single Disc	25mm	602479	602512
00-06	FLST Models (except FLST5), Single Disc	3/4"	602958	602520
86-99	FLST Models (except FLST5), Single Disc	3/4"	602957	602519
00-07	FLST5 Models, Single Disc	3/4"	602984	602983
07-10	FXST Models (except FXST5), Single Disc	25mm	602961	602518
00-06	FXST Models (except FXST5), Single Disc	3/4"	602955	602515
84-99	FXST Models (except FXST5), Single Disc	3/4"	602960	602514
00-06	FXST5 Models, Single Disc	3/4"	602958	602520
93-99	FXST5 Models, Single Disc	3/4"	602957	602519
08-11	FXCW Rocker Models, Single Disc	25mm	602967	602968
Year	Dyna Models	Axle Size	Chrome	Black
08-12	FXD/FXD/FXDB/FXDC Models, Single Disc	25mm	602474	602507
06-07	FXD/FXD/FXDB Models, Single Disc	1"	602475	602508
04-05	FXD, FXDC, FXDB, FXDL Models Single Disc	1"	602561	602527
04-05	FXD, FXDC, FXDB, FXDL Models Dual Disc	1"	602963	602559
00-03	FXD, FXDC, FXDB, FXDL Models Single Disc	3/4"	602473	602506
00-03	FXD, FXDC, FXDB, FXDL Models Dual Disc	3/4"	602964	602560
91-99	FXD/FXDL Models, Single Disc	3/4"	602554	602525
91-99	FXD/FXDL Models, Dual Disc	3/4"	602962	602550
08-12	FXDF Models, Dual Disc	25mm	602555	602511
08-12	FXDWG Models, Single Disc	25mm	602476	602509
06-07	FXDWG Models, Single Disc	1"	602477	602510
00-05	FXDWG Models, Single Disc	3/4"	602955	602515
93-99	FXDWG Models, Single Disc	3/4"	602960	602514
Year	FXR Models	Axle Size	Chrome	Black
00-07	FXR Models, Single Disc	3/4"	602473	602506
00-07	FXR Models, Dual Disc	3/4"	602964	602560
84-99	FXR Models, Single Disc	3/4"	602554	602525
84-99	FXR Models, Dual Disc	3/4"	602962	602550
Year	VROD Models	Axle Size	Chrome	Black
08-12	All VRSC Models with ABS, dual disc	25mm	602980	602979
08-12	All VRSC Models without ABS, dual disc	25mm	602976	602975
00-07	All VRSC Models, dual disc	1"	602973	602989
Year	Sportster Models	Axle Size	Chrome	Black
08-12	All XL Models (except Forty-Eight), Single Disc	25mm	602472	602505
10-12	XL Forty-Eight, Single Disc	25mm	602986	602985
00-07	All XL Models, Single Disc	3/4"	602473	602506
00-07	All XL Models, Dual Disc	3/4"	600812	602560
84-99	All XL Models, Single Disc	3/4"	602554	602525
84-99	All XL Models, Dual Disc	3/4"	600811	602550

RevTech Chrome and Black Anodized Billet Rear Wheel Hubs					
Year	Touring Models	Axle Size	Chrome		Black Anodized
09-12	All Touring Models with ABS	25mm	602482		602531
09-12	All Touring Models without ABS	25mm	602481		602530
08	All Touring Models with ABS	25mm	602484		602533
08	All Touring Models without ABS	25mm	602483		602532
02-07	All Touring Models	1"	602949		602544
00-01	All Touring Models	3/4"	602952		602543
86-99	All Touring Models	3/4"	602948		602539
Year	Softail Models	Axle Size	Chrome		Black
11-12	FLST Models with ABS (except FLSTF)	25mm	602969		602970
08-10	FLST Models without ABS	25mm	602486		602535
00-07	FLST Models (except 2007 FLSTF)	3/4"	602487		602540
86-99	FLST Models	3/4"	602948		602539
08-12	FLSTF Models	25mm	602486		602535
07	FLSTF Models	3/4"	602953		602541
08-10	FXST Models	25mm	602486		602535
07	FXST Models	3/4"	602953		602541
06	FXST Models	3/4"	602943		602944
00-05	FXST Models	3/4"	602487		602540
86-99	FXST Models	3/4"	602948		602539
00-07	FXSTD Deuce	3/4"	602487		602540
08-11	FXCW Rocker Models	25mm	602971		602972
Year	Dyna Models	Axle Size	Chrome		Black
08-12	All Dyna Models	25mm	602489		602538
06-07	All Dyna Models	1"	602488		602537
00-05	All Dyna Models	3/4"	602487		602540
91-99	All Dyna Models	3/4"	602948		602539
Year	FXR Models	Axle Size	Chrome		Black
00-12	All FXR Models	3/4"	602487		602540
86-99	All FXR Models	3/4"	602948		602539
Year	VROD Models	Axle Size	Chrome		Black
08-12	All VROD Models with ABS	25mm	602982		602981
08-12	All VROD Models without ABS	25mm	602978		602977
00-07	All VROD Models with 18x8.50" wheels	1"	602974		602990
00-07	All VROD Models with 18x5.50" wheels	1"	602987		602988
Year	Sportster Models	Axle Size	Chrome		Black
08-12	All XL Models	25mm	602485		602534
05-07	All XL Models	1"	602949		602544
00-04	All XL Models	3/4"	602487		602540
86-99	All XL Models	3/4"	602948		602539
Year	Custom Wide Tire Applications	Axle Size	Chrome		Black
00-12	18x5.50 Wheel for custom application for 180/200 wide drive frames, 3/4" axle	3/4"	602487		602540
00-12	18x8.50 Wheel for custom application for 240/250 wide drive frames, 1" axle	1"	602947		602549
00-12	18x8.50 Wheel for custom application for 240/250 wide drive frames, 1" axle SINGLE SIDED	1"	602950		602951
00-12	18x8.50 Wheel for custom application for 240/250 wide drive frames, 3/4" axle	3/4"	602954		602548
00-12	18x8.50 Wheel for custom application for 240/250 wide drive frames, 3/4" axle SINGLE SIDED	3/4"	602945		602946



Cobra AV71/AV72

- Densely wrapped belt in center for stability, wear, and mileage; less dense on shoulders for huge, compliant contact patch
- Consistent handling and stability for the full life of the tire
- Snakeskin Sidewall Effect
- Tread gives optimal water dispersal
- Design reduces flex for improved grip and stability

Cobra AV71... Front Radial (TL)

- 1011260** 130/70HR-18 " Blackwall
- 1011261** 120/70ZR-19 " Blackwall
- 1011281** MH90V-21" Blackwall Blackwall (non-radial)
- 1011262** 120/70V-21" Blackwall Blackwall (non-radial)
- 1011263** 130/60VR-23 " Blackwall
- 696199** 150/80R16 71V

Cobra AV72... Rear Radial (TL)

- 1011265** 180/60HR-16" Blackwall
- 1011266** 180/70HR-16" Blackwall
- 1011268** 200/60VR-16" Blackwall
- 1011269** 240/50VR-16" Blackwall
- 1011270** 200/55VR-17" Blackwall
- 1011271** 180/55VR-18" Blackwall
- 1011273** 200/55VR-18" Blackwall
- 1011274** 240/40VR-18" Blackwall
- 1011276** 250/40VR-18" Blackwall
- 1011277** 300/35VR-18" Blackwall
- 1012162** 300/40VR x 17"
- 1012177** 330/30VR-17" Raised Black Letter



Speedpoint Fender Brackets for Springer Models

These fender brackets are German precision CNC made units to mount fenders which move with the damper. They feature a integrated bracket to bolt on brake calipers and come either polished or black. Depending on your style you can choose between right or left brackets matching your model year with or without caliper bracket. We recommend to use RevTech calipers (not included). Sold each.

- 653412** Left, for bolt on calipers -99, polished
- 653413** Right, for bolt on calipers -99, polished
- 653414** Left, for bolt on calipers -99, flat black
- 653415** Right, for bolt on calipers -99, flat black
- 653416** Left, for bolt on calipers 00-, polished
- 653417** Right, for bolt on calipers 00-, polished
- 653418** Left, for bolt on calipers 00-, flat black
- 653419** Right, for bolt on calipers 00-, flat black
- 653420** Fender Bracket left or right without caliper mounts, polished
- 653421** Fender Bracket left or right without caliper mounts, flat black



fea-

left



RST Steel Anchor Rods

Anchor rods made from D10 VA stainless steel for rear custom brakes applications. Complete with zinc-plated M10 heim joints.

- 84432** 8"-long
- 84433** 6"-long
- 84434** 4"-long

★ HI-PERFORMANCE BILLET 4-PISTON BRAKE CALIPERS ★



Front Caliper Kits

Fits all 08-11 FLHT, FLHTC, FLHTCU, FLHX, FLHR, and FLTR models (will not work with stock brake disc, must use RevTech or most other after market brake disc)

Chrome	
697305	Left caliper for 11.8" disc on 08-11 Touring models, chrome
697307	Right caliper for 11.8" disc on 08-11 Touring models, chrome
Black	
697304	Left caliper for 11.8" disc on 08-11 Touring models, Black
697306	Right caliper for 11.8" disc on 08-11 Touring models, Black

Fits all 00-11 Softail (except Springer) & Dyna, 00-07 Touring models and 00-03 XL

Chrome	
697303	Left caliper for 11.8" & 11.5" disc on 00-11 Softail (except Springer) & Dyna, 00-07 Touring and 00-03 XL models, chrome
697301	Right caliper for 11.8" & 11.5" disc on 00-11 Softail (except Springer) & Dyna, 00-07 Touring and 00-03 XL models, chrome
Black	
697302	Left caliper for 11.8" & 11.5" disc on 00-11 Softail (except Springer) & Dyna, 00-07 Touring and 00-03 XL models, black
697300	Right caliper for 11.8" & 11.5" disc on 00-11 Softail (except Springer) & Dyna, 00-07 Touring and 00-03 XL models, black

Fits all 84-99 Big Twins and Sportster models (will not work with stock brake disc, must use RevTech or most other after market brake disc.)

Chrome	
697296	Left caliper for 11.5" disc on all 84-99 Big Twins and Sportster models, chrome
697298	Right caliper for 11.5" disc on all 84-99 Big Twins and Sportster models, chrome
Black	
697297	Left caliper for 11.5" disc on all 84-99 Big Twins and Sportster models, Black
697299	Right caliper for 11.5" disc on all 84-99 Big Twins and Sportster models, Black



697302

697300

**CUSTOM
CHROME
EXCLUSIVE**

MADE IN THE USA

Rear Caliper Kits

Touring Rear Caliper Kits

Chrome	
697317	Rear caliper kit for all 08-11 Touring models, chrome (will not work with stock brake disc, must use RevTech or most other after market brake disc.)
697315	Rear caliper kit for all 02-07 Touring models, chrome
697313	Rear caliper kit for all 00-01 Touring models, chrome
Black	
697316	Rear caliper kit for all 08-11 Touring models, black (will not work with stock brake disc, must use RevTech or most other after market brake disc.)
697314	Rear caliper kit for all 02-07 Touring models, black
697312	Rear caliper kit for all 00-01 Touring models, black

Softail Rear Caliper Kits

Chrome	
697311	Rear caliper kit for all 08-11 Softail models, chrome
697309	Rear caliper kit for all 00-06 Softail models, chrome
697330	Rear caliper kit for all 84-99 Softail models, chrome
Black	
697310	Rear caliper kit for all 08-11 Softail models, black
697308	Rear caliper kit for all 00-06 Softail models, black
697331	Rear caliper kit for all 87-99 Softail models, black

Dyna Rear Caliper Kits

Chrome	
697329	Rear caliper kit for all 08-11 Dyna models, chrome
697327	Rear caliper kit for all 06-07 Dyna models, chrome
697325	Rear caliper kit for all 00-05 Dyna models, chrome
Black	
697328	Rear caliper kit for all 08-11 Dyna models, black
697326	Rear caliper kit for all 06-07 Dyna models, black
697324	Rear caliper kit for all 00-05 Dyna models, black

Sportster Rear Caliper Kits

Chrome	
697323	Rear caliper kit for all 08-11 XL Sportster models, chrome
697321	Rear caliper kit for all 05-07 XL Sportster models, chrome
697319	Rear caliper kit for all 00-04 XL Sportster models, chrome
Black	
697322	Rear caliper kit for all 08-11 XL Sportster models, black
697320	Rear caliper kit for all 05-07 XL Sportster models, black
697318	Rear caliper kit for all 00-04 XL Sportster models, black

Custom Chrome Springer Front Ends

These kits accept late model fenders, brakes and wheels with 3/4"-diameter axles. The reinforced top and bottom trees reduce flex and improve handling. They feature TIG welded alloy steel construction for strength and durability, and fit most Big Twins from 49-10. Kit includes main springs, fork legs, neck, top nut, crown nut, rocker assemblies with brass bushings and top clamp. Available fully chromed, or black with chrome rockers, top clamp and springs. They fit all cast neck Big Twin models from 49-07 with 1" neck bearings (except FXR, Dyna Glide and Touring models), and require the use of risers with 1/2"-20 mounting bolts.

Note: Use the sizing chart below to determine which length would be the best part number for your particular application.



Chrome Front Ends

08631	Stock 22" assy., with Approval	08636	Stock 22" assy., with Approval
08630	2" under stock, with Approval	08635	2" under stock, with Approval
08632	2" over stock, with Approval	08637	2" over stock, with Approval
08633	4" over stock, with Approval	08638	4" over stock, with Approval
08634	6" over stock, with Approval	08639	6" over stock, with Approval
640730	8" over stock	640736	8" over stock
640731	10" over stock	340737	10" over stock
640732	12" over stock	640738	12" over stock
640733	14" over stock	640739	14" over stock
640734	16" over stock	640740	16" over stock
640735	18" over stock	640741	18" over stock

Accessories Chrome Front Ends

632970	Chrome fender brackets for -2" to +8" front ends, (3/4")
632971	Black fender brackets for -2" to +8" front ends, (3/4")
632972	Chrome fender brackets for +10" to +18" front ends, (1")
632973	Black fender brackets for +10" to +18" front ends, (1")
12643	Chrome 3"-tall handlebar riser set (1/2"-20 mounting bolts)
160879	Glide-style top clamp with 4 3/4" centerline (includes pinch bolts)
08640	Axle kit with axle, spacers, nuts, and speedometer drive adaptor for 84-99 single flange wheels



600154



600155



600157



Custom 'Bobber Style Gas Tanks' by Cole Foster

An absolutely beautiful new tank designed with the keen styling of Cole Foster - Salinas Boyz Customs. The tanks feature a mini pop-up gas cap, and a unique raised tapered bead down the center of the tank. Each tank has been designed to fit to stock frames but can also be easily adapted to any custom application. They use the existing stock rubber mounts or are included as needed. Fuel capacity is 2.35 gallons.

600155 Fits Evolution Softtail models from 84-99 and 4-speed FX and FL models

Note: These applications require the front frame dash mount to be cut off and rear screw hole modified.

600157 Fits carbureted Twin Cam 88 Softtail models from 00-06

600154 Fits Sportster models from 82-03

Replacement Gas Caps

47775 Stainless Steel (sold each)

47777 Chrome (sold each)

683620 Gas Cap Gasket






MÜLLER MOTORCYCLE AG


'Müller' Lowering Kits with Approval for Softail Models

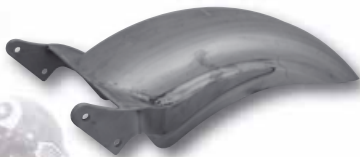
With these German-made kits you can lower your bike approximately 1" (25 mm) from stock.

84808 Fits all Softail models from 89-99 (Bushings included)

687086 Fits all Softail models from 00-10

CCE Custom Rear Fender for Softtail models

These "almost bolt on" fenders are "Made By ZCB". Available with or without Approval!



Raw, Unground Finish, Medium, 210 mm Tire, 220 mm Inner Width

- 685382** Softail Carburettor Models with 64mm Hole Distance
- 685383** Softail T/C Injection Models -06 with 64mm Hole Distance
- 685384** Softail T/C Injection Models 07- with 29 mm Belt, 97 mm Hole Distance, 10 mm Offset
- 685385** Softail T/C Injection Models 07+ with 20mm Belt, 97mm Hole Distance, Centered

Raw, Unground Finish, Medium, 250 mm Tire, 270 mm inner Width

- 685386** Softail Carburettor Models with 64 mm Hole Distance
- 685387** Softail T/C Injection Models -06 with 64 mm Hole Distance
- 685388** Softail T/C Injection Models 07+ with 29mm Belt, 97mm Hole Distance, 10mm Offset
- 685389** Softail T/C Injection Models 07+ with 20mm Belt, 97mm Hole Distance, Centered

Raw, Ground Finish, Medium, 210 mm Tire, 220 mm Inner Width, With Approval

- 685390** Softail Carburettor Models with 64mm Hole Distance
- 685391** Softail T/C Injection Models -06 with 64mm Hole Distance
- 685392** Softail T/C Injection Models 07+ with 29mm Belt, 97mm Hole Distance, 10mm Offset
- 685393** Softail T/C Injection Models 07+ with 20mm Belt, 97mm Hole Distance, Centered

Raw, Ground Finish, Medium, 250 mm Tire, 270 mm inner Width, With Approval

- 685394** Softail Carburettor Models with 64mm Hole Distance
- 685395** Softail T/C Injection Models -06 with 64mm Hole Distance
- 685396** Softail T/C Injection Models 07+ with 29mm Belt, 97mm Hole Distance, 10mm Offset
- 685397** Softail T/C Injection Models 07+ with 20mm Belt, 97mm Hole Distance, Centered



motogadget

M-Can Adapter a World Novelty from Motogadget!

M-Can - the adaptor for trouble-free installation of instruments directly at the OBD interface. With help of a tiny box the installation of sensors for speed or tach becomes superfluous. Every Harley Davidson from 04 on has an OBD interface (ON Board Diagnosis) in form of a 3-pole plug connector on the bike. With the digital adaptor M-Can which is simply plugged into this connector, instruments of the Motoscope series are linked directly to the digital data bus of the motorcycle. The installation and connection of sensors for speed and tach is not necessary anymore. Now this data is read directly from the diagnostic interface. The power supply of the instruments is also fed by the OBD interface. With this adaptor it's possible to connect a 'motoscope mini' without any other connection work on the motorcycle. Also the signal for the MIL (Malfunction Indicator Light) for trouble codes from engine and periphery can be indicated by connection of a LED / warning lamp. A complete exchange of the original instruments is possible and also customizing of the latest models is an option without reducing operational safety. The M-Can is only a tiny, fully molded box, an OBD plug and a long connecting lead to the instrument. It is resistant to vibrations and water. Operation is guaranteed up to under 5 V of on-board voltage and therefore corresponds to all SAE specifications for motorcycles. Not for CAN-Bus models.

696287 M-Can Adapter



'Hyper Force' Universal Gauge Bracket by Pistor

Universal gauge bracket mounts to the side of the cylinder head on Twin Cam 88 and most Evolution models. Looks really cool, for gauges with 40mm/48mm/52mm diameter. Pistor's LED kits (CC #'s 686844 thru 686846), oil line kits (CC #'s 686869 and 686870), and gauge cups can be used. Will not fit RevTech engines.

686872 Smooth, polished

686873 Smooth, chrome

686874 Smooth, black



'Hyper Force' Mini LED Kits with Brackets by Pistor

Three LED's in green, yellow and red can be used to show several motor functions. Connection directly to the 12-volt bord net is possible.

686844 Polished

686845 Chrome

686846 Black

Replacement Parts

682177 LED green

682178 LED yellow

682179 LED red



motogadget

Motogadget Tiny Series

The new Motogadget 49 mm Tiny Series has following functions: Speed indication up to 200 km/h (or mph), trip odo (km or mi), total odo (km or mi), maximum speed (km/h or mph), on-board voltage, time, 4 LED indicator lights.

652565 MST SPEEDSTER BLACK

652566 MST SPEEDSTER POLISHED

652567 MST VINTAGE BRASS

motogadget

Motoscope Tiny

The motoscope tiny is a very small and compact round instrument. It measures the speed digitally and indicates it precisely with a stepper motor and a pointer. The diameter of 49 mm (installation diameter) and depth of only 24 mm provides completely new possibilities for that integration of the instrument into a vehicle. The billet housing of high-quality aluminum is CNC machined, brushed and anodized or polished in manual work. It is totally waterproof and vibration resistant. The pointer of red anodized aluminium provides together with the white dial a very classical design in high-quality. Besides, the real innovation is hidden behind the dial. Ingenious technology makes the classical look possible without compromises. The dial completely gets by without display cut out and LC-Display. motogadget specially developed a LED display which is not visible in the OFF state. It shines only in the switched ON state from the back of the dial. Thus looks the motoscope tiny persuasive in a classic style and uses digital technology extremely unobtrusively. The motoscope tiny is available with a black anodized housing, alternatively with polished or black anodized bezel. The connection with the original H-D speed sensor is easily possible. The m-CAN adaptor is necessary recommended for all H-D models from 2007 or later.



Features:

- Speed indication up to 200 km/h (or mph) by pointer - speed indication above 200 is displayed numerically with the LED display up to 999 km/h (or mph)
- trip odo (999.9 kilometres or miles)
- total odo (99,999 kilometres or miles)
- time
- maximum speed (km/h or mph)
- four indicator lights: flasher, high beam, idle, oil pressure

Scope of delivery:

Instrument, speedo sensor, installation and operation instructions

Dimensions

- Installation diameter: 49 mm
- Total depth: 31 mm
- Installation depth: 24 mm
- Cable length: 70 cm
- Weight with cable: approx. 85 g
- Mounting: 2 x M3 insert
- on-board voltage

682839 MG motoscope tiny with black ring

682840 MG motoscope tiny with polished ring

682841 MG cup for tiny, black

682842 MG cup for tiny, polished

682843 MG universal bracket for tiny, black

682844 MG universal bracket for tiny, polished

Optional Reed Sensor

682833 MG speedo sensor kit reed



602706	NITRO-18 23X3.50 CHROME
603702	NITRO-18 CHR. 1" 66T
602923	DISC, 11.5" 1PC FR NITRO 18
602924	DISC, 11.5" 1PC RR NITRO 18
697310	FXSTB/C, FLSTC/F/N/SB 08-10, B
685384	CCE Fender Medium T/C 07+ Raw 29mm Belt
652993	TB Breather bracket TC
601845	GEN3.5 DFO B/TWINS
86671	ZCB UNIV. BELT GUARD EVO/TC Black
632370	SPEEDSTER HANDLEBARS BLK
600157	BOBBER TNK 00+ S/T FRMS
8635	SPRNGR. 2" UNDER F/END BLK/CHR
697136	2" BLACK OPEN BELT DR 2007-11
696484	BSL TOP CHOP STAG. E3 EXH. 70MM S/S BLK.
1011273	AV72 R 200/55X18 V COBRA
1011263	AV71 F 130/60X23 V COBRA
602679	NITRO 18 CHR BILLET 18X5.5
683819	TB Side Mount Short S/T, Rocker '08+
683813	TB Solo Seat Bracket TC
653008	TB Inside Plate 18x20cm BLK
653052	TB Lic.Plate Light Inside Plate BLK.
602486	RR HUB 08-09 FXST/FLST MODELS
602961	07-10 FXST FRT HUB, CHR
632127	SLIM LINE SOLO SEAT WIDE BLACK
12393	2"X4 1/4"RECTANGULAR MIRROR
684344	PM CONTOUR HANDLE BAR SET
687086	MÜLLER LOWERING KIT W/Approval S/TAIL
84434	TC 00+ RST STEEL ANCHOR ROD ASSY.
652789	PB LED TAILLIGHT BATES STYLE
601208	R/T DFO 06 DYNA MODELS
682842	MG CUP FOR TINY POL
632223	RISER STUD HOLE KIT F/DOGBONE
653414	Spr. Cal.-Fend. Brkt.,left,f.
18026	SPRINGER H/LIGHT LOWERING BRKT
652566	MG mst speedster pol
683625	PB LED TURN SIGNAL / PEN HEAD / BLK
686874	HYPER UNI INST. BRK. 40,48,52mm ALL BLK.
686846	HYPER FORCE 3 MINI LED KIT w BRACKET BLK
696287	MG M-CAN MOTOSCOPE ADAPTOR
12815	INTERNAL SNGL.THROTTLE ASSY-1"