



RIDE UNRIVALLED

www.custom-chrome-europe.com



World's Finest Products For Harley-Davidsons

HOLLISTER



SOFTAIL FXSTD DEUCE 2003



Horst Rösler







Daddy-O Stitch

642064



Bel Air Stitch

642060



Smooth

640397



640398



Le Pera™

Le Pera 'Buddy Boy' Custom Solo Seats

Custom solo seats with a deeper seating area for added back support, available in two sizes. Solo seats include a square-end universal seat bracket. Seat springs sold separately.

- 640397** Small 'Buddy Boy' Solo seat (9" wide x 13 1/4" long)
- 640398** Large 'Buddy Boy' Solo seat (13" wide x 15" long)
- 642060** Large 'Buddy Boy' seat Bel Air Stitch, Black
- 642061** Large 'Buddy Boy' seat Daddy-O Stitch, Black
- 642062** Large 'Buddy Boy' seat smooth (no Stitch!), Distressed TVD Brown
- 642063** Small 'Buddy Boy' Seat Bel Air Stitch, Black
- 642064** Small 'Buddy Boy' Seat Daddy-O Stitch, Black
- 642065** Small 'Buddy Boy' Seat smooth (no Stitch!), Distressed TVD Brown

CATALOG "EDITION 47" PAGE 2.35



Thunderbike Solo Seat Brackets

Complete Kit (except seat springs) including mounting kit. The installation on the injection Softail models requires relocation of the ECM and fusebox!

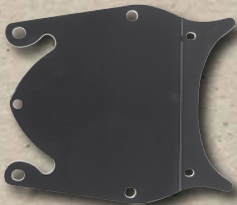
- 683813** Solo Seat Bracket Twin Cam Softail 00-17
- 683814** Solo Seat Bracket Rocker & Breakout 08-17
- 683815** Solo Seat Bracket Dyna 06-17
- 656219** Solo Seat Bracket Sportster 04-06 and 10-17

CATALOG "EDITION 47" PAGE 2.40

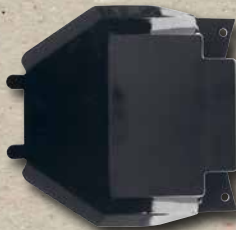
656219



683815



683814





Chrome Seat Springs for Solo Seats

This cool looking spring is an alternative to the standard style of coil spring found under most solo seats. Sold in pairs.

632059 2"-tall

632060 3"-tall

632061 3 1/2"-tall



CATALOG "EDITION 47" PAGE 2.42



Joker Machine Serrated Floorboards

- Super strong, yet light-weight.
- The comfortable serrated foot surface area gives you a good "bite" onto the bottom of your shoe.
- Has our exclusive pitch adjustment that enables you to change the angle of the floorboard in order to adjust it to a "level" riding position.
- Available in hard black or raw aluminum finish.
- Mounts with stock mounting hardware.
- Dimensions: 4.75" wide x 13.5" long x .75" thick

- 607874** Floorboard kit, raw
607875 Floorboard kit, black
607876 Brake pedal cover, raw
607877 Brake pedal cover, black

CATALOG "EDITION 47" PAGE 3.47



Adjustable Serrated Footpegs by Joker Machine

Fully CNC machined from solid 6061-T6 bar with an exclusive pitch adjustment screw to change the angle of the peg.

Foot Pegs

- 684973** Long, black
684974 Long, satin
684975 Short, black
684976 Short, satin
890389 Stubby, black
890390 Stubby, satin

Shift Pegs

- 684977** Shift peg satin
684978 Shift peg black

CATALOG "EDITION 47" PAGE 3.30



642392

642393

KURYAKYN

Custom Chrome Brake Pedal

642392 Chrome, fits FXST 00-06 (repl. OEM# 42515-00A)

642393 Chrome, fits FXST 00-06 (repl. OEM# 42597-00A)

CATALOG "EDITION 47" PAGE 3.20



605174



605175



605176

KURYAKYN

Kuryakyn Custom Shift Levers

Give your gears a little edge! Replace the everyday stock pieces on floorboard equipped Touring & FLST Models with one of Kuryakyn's inventive shift lever designs. A great complement to any of our other foot control accessories.

605174 Slotted stock length shift lever for all Heel or Toe on 83-17 Electra Glides, Road Glides, Street Glides, Tour Glides, Road Kings; & all 86-17 FLST Models

605175 Liberator stock length shift lever for all Heel or Toe on 83-17 Electra Glides, Road Glides, Street Glides, Tour Glides, Road Kings; & all 86-17 FLST Models

605176 Girder extended length shift lever for all Heel or Toe on 83-17 Electra Glides, Road Glides, Street Glides, Tour Glides, Road Kings; & all 86-17 FLST Models

CATALOG "EDITION 47" PAGE 3.18



890537

890538

Utility Mirrors

- Retro styles
- Die-cast aluminum
- Right or left side
- Rectangular mirror sizes: 2,5" x 4"
- Round mirror sizes: 3-3/4"

Round

890537 Black (each)

890538 Chrome (each)

890541 Black (pair)

890542 Chrome (pair)

Rectangle

890539 Black (each)

890540 Chrome (each)

890543 Black (pair)

890544 Chrome (pair)



890539

890540

CATALOG "EDITION 47" PAGE 4.111



890456

890457

890458

890459



Clamps with Micro Switch by Kustom Tech

- Forged aluminium
- 1 Micro switch
- For 1" Deluxe & Classic lines

890456 Polished

890457 Satin

890458 Raw

890459 Black

890469 Replacement micro switch

CATALOG "EDITION 47" PAGE 4.69



696042



890468



Vintage Grips by Kustom-Tech

For 1" handlebar and to use with external cable or with the Kustom Tech internal throttle housing. In aluminium billet with brass rings. To match with the Vintage foot-pegs

For External Throttle

696042 Aluminium & Brass

890468 Black & Brass

For Internal Throttle

890466 Aluminium & Brass

890467 Black & Brass

CATALOG "EDITION 47" PAGE 4.103



CATALOG "EDITION 47" PAGE 4.60

Grimeca Hand Controls by Kustom Tech

- Old Style Grimeca master cylinder for a a very retro style
- Cast aluminum with very compact size
- Black anodized finish
- For 1" or 7/8" handlebar
- Master cylinder 12 mm or 14 mm
- Clutch lever comes with 2 special pins (late & early cable)

Brake Master Cylinder	For 1" Handlebar	For 22 mm Handlebar
12mm (15/32")	890494	890495
14mm (9/16")	890496	890497
Clutch Assembly		
Lever Assembly for 1" Handlebar	890498	890499
Replacement Parts		
Master Cylinder Lever	890492	890492
Clutch Lever	890493	890493
Rebuild Kit 12 mm (15/32")	652807	652807
Rebuild Kit 14 mm (9/16")	652808	652808
Brake Switch ONLY	894498	894498
Brake Switch with wire	894499	894499



892542



Müller Internal Spiral Grips

Nice and clean handlebar with this internal throttle and clutch sets. Moves the throttle or clutch cable into your handlebar. Use 122 mm or 130 mm mirror adapters according to your grip length.

- 892542** Internal grip right side, idle
- 895517** Internal grip left side, clutch/brake
- 895518** Bar-end mirror adapter for Müller internal grips left and right, 122 mm grip length
- 895519** Bar-end mirror adapter for Müller internal grips left and right, 130 mm grip length
- 895520** Handlebar conversion tool for Müller internal grips left and right

CATALOG "EDITION 47" PAGE 4.110

Stainless Steel Push Buttons

Very small push buttons made of stainless steel for use in conjunction with 1" handlebars. Two versions are available that may be easily connected to horn, starter or lighting relays. Sold each.

686000 2-wire switch

686001 1-wire switch

CATALOG "EDITION 47" PAGE 4.71



Polyurethane Handlebar Damper Kit by Arlen Ness

Polyurethane bushings have excellent vibration damping without the mushy feel of rubber dampers. Includes inner sleeves and chrome washers. Fits most models from 73-17.

05846 Complete kit

631512 Fits all Touring models from 80-13

CATALOG "EDITION 47" PAGE 4.51



Chubby 1 1/4" Billet Risers by Wild 1, Inc.

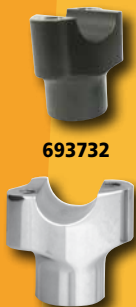
1-1/4"-thick billet aluminum risers with blind hole tapped and a brilliant chrome finish. Super versatile; they work with any standard 1" handlebar, Wild 1 Chubby, bars and most other bars. Use your stock top clamp, aftermarket top clamp, or Wild 1, custom billet top clamps. Fits on all models with 3.5" center-to-center riser spacing. Tapped for standard 1/2" x 13 mounting bolts. Fit most models from 73-17

Chrome

- 19270** 1.5" riser set, Approval
- 19204** 3.5" riser set, Approval
- 19271** 4.5" riser set, Approval
- 19188** 6.0" riser set, Approval
- 19272** 5.5" pullback riser set, Approval
- 19205** 9.5" pullback riser set, Approval

Black

- 693732** 1.5" riser set, black
- 693733** 3.5" riser set, black
- 693734** 4.5" riser set, black
- 693735** 6.0" riser set, black
- 693736** 5.5" pullback riser set, black
- 693737** 9.5" pullback riser set, black



693732

19270



19204

19272

CATALOG "EDITION 47" PAGE 4.45

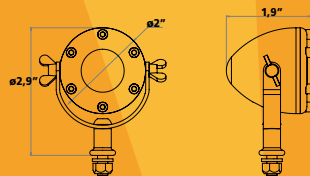


Fehling 'Flat Track' Bars with Approval

36" wide, 7" high, 7" pullback, 11" centre width. The 3-hole and 4-hole bars permit internal wiring thru the bars.

- 85195** 1", pre-82
- 85196** 1", 82-17
- 86324** 1", 82-17, black
- 86949** 1", 3-hole, 82-17
- 85197** 1", 4-hole, 82-17
- 85198** 7/8", for Japanese bikes

CATALOG "EDITION 47" PAGE 4.29



Chopper Culture LED Taillights E-Approved

Made of 7075 aircraft billet aluminum in Germany and comes in authentic Chopper Culture quality. Clear lens and red LED insert for taillight and brake light.

- 892153** Polished
- 892154** Polished/brass
- 892155** Black anodized/polished
- 892156** Black anodized/brass
- 892157** Flat black anodized

CATALOG "EDITION 47" PAGE 5.36



642843



LED

NEW
FITMENTS

CATALOG "EDITION 47" PAGE 5.13

KURYAKYN

LED Headlamp Phase 7

Increase visibility and enhance your nighttime riding experience with these regulation approved halogen light replacements. The advanced LED technology provides improved performance and significantly reduced draw compared to halogen products, allowing more power for other vehicle requirements and extending charging system life.

- Uses standard H4, 3-blade wiring connector
- Complex reflector design provides unmatched performance while providing the appearance of a traditional headlamp
- Impact-resistant polycarbonate lenses with chemical and scratch-resistant, non-yellowing coating
- Low beam current draw 1.8 amps (stock halogen is 4.9 amps)
- High beam current draw 3.6 amps (stock halogen is 5.5 amps)
- Made in the U.S.A.

For Harley Davidson 91-17 and Indian 14-17 (except Scout) with 7" Headlights

642843 For right drive traffic

642844 For left drive traffic

775487 Headlamp Adapter Harness for 14-16 Touring & Trike



Custom Chrome Headlamp Nacelle Kit

Fits 86-16 FLST, FLSTF/B and FLSTC models (repl. OEM# 67907-96C).

642380 Chrome

642381 Glossy black

CATALOG "EDITION 47" PAGE 5.12



LED

Hi-Power LED Turn Signals 'PB 2', E-Approved

Head: Ø 20 x D 44 mm, stem: Ø 12x L 17 mm M8 thread

618421 Aluminum housing black with smoke lens, pair

618422 Aluminum housing chrome with clear lens, pair

CATALOG "EDITION 47" PAGE 5.53

motogadget

m-Unit V.2

The m-Unit V.2 is a digital control unit for your motor-bike - the 'heart' of the vehicle's electrical system.

- Control over handle bar push-buttons or conventional switch control units
- Completely replaces the fuse panel up to 8 independent circuits are digitally monitored and de-energized in case of failures. After removal of the fault, the safety feature is automatically reset
- Diagnostics for all circuits use 15 status LEDs
- highest possible operational dependability with micro processor controlled and monitored switching operations

Dimensions and specifications:

L/W/H: 101 x 61 x 28 mm

Fixture: 2 x M5 screws, stainless steel (mounting and ground terminal), 1 x M5

Parts delivered:

m-Unit V.2, approx. 50 cm connector cable for battery plus terminal with 10 mm² nominal cross-section, 2 cable eyelets, 1 x M5 stainless steel screw, 2 x M5 stainless steel screw with nut, detailed installation and operating instructions

682752 m-Unit V.2

690974 m-Button



682752



690974

CATALOG "EDITION 47" PAGE 6.14



630107

DYNA2000

Dynatek 2000 for Carbureted Twin Cam & Sportster models

- Single Fire ignition
- Fully programmed
- Stock OEM mounting
- Stock OEM connectors
- Reverse battery and Spike protection built-in

630107 Twin Cam carbureted 99-03

890545 Twin Cam carbureted 04-06

890546 Sportster 04-06

CATALOG "EDITION 47" PAGE 6.36



Billet Aluminum Motor Mounts by MW

These stylish German-made motor mounts are CNC-machined and then given a highly-polished finish and furnished with stainless steel mounting hardware. They're the ideal companions to the MW coil bracket systems which can be seen above, and are available in Standard and Super Light versions which feature stylish weight saving cut-outs. If desired, Original Equipment-style ignition switches can be installed in place of the coil brackets on these motor mounts thru the additional purchase of a CCE #86289 Switch Mounting Bracket.

Fit Softail Models from 00-04 (except EFI models)

86274 Standard

86277 Super Light

Coil cover for Twin Cam carburetor models

686157 Coil housing

686156 Coil housing with hole for ignition switch

CATALOG "EDITION 47" PAGE 6.45



KURYAKYN

Regulator Cover for Softails by Kuryakyn

A stock voltage regulator normally fades into the background, but with this sharp new Voltage Regulator Cover it will be right in the spotlight! Deep fins & beautiful chrome, it really stands out! For 01-13 Softails.

605208 Softail regulator cover

CATALOG "EDITION 47" PAGE 6.60



Series Custom Fit Wire Sets			8mm Spiro Pro
Year	Model	Model	Black
FL			
65-79	FL		602130
80-98	FLH	Touring Models	602138
99-03	FL	Touring Models with Carb.	602142
99-08	FL	Touring Models with Fuel Injection	602146

CATALOG "EDITION 47" PAGE 6.50



LITHIUM

SuperSmart **Battery Tender**

Battery	Lead Acid Equivalent Ah	CCA	Dimensions (mm)		
			Length	Width	High
890450	7-9Ah	120A	107	56	85
890451	10-14Ah	240A	134	65	92
890453	21-24Ah	360A	165	86	130
890454	26-35Ah	480A	165	86	130

CATALOG "EDITION 47" PAGE 6.75



688189

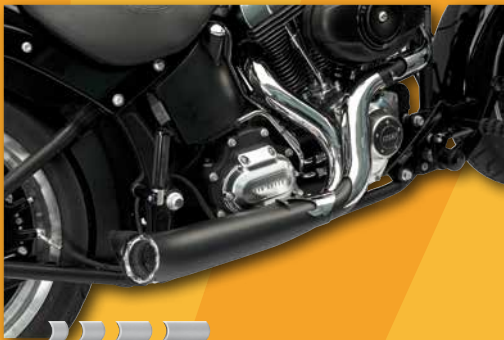
Oxygen Sensor Bung Plugs

Used to seal unused O2 sensor bungs. Available for 18mm and 12mm bungs. Sold each.

688189 Sensor bung plug 18x1.5mm

688190 Sensor bung plug 12x1.25mm

CATALOG "EDITION 47" PAGE 7.88



Supertrapp Phantom Pipe II 2:1 Exhaust System

It's an updated version of the original Phantom pipe for Softails and the baffled FLH Phantom pipe.

607505 For Softail 12-17 and Dyna 12-17, black

607506 For Softail 07-11 and Dyna 06-11, black

CATALOG "EDITION 47" PAGE 7.58

Exhaust systems shown are intended only for restoration purposes or to be used on closed areas such as race tracks. The use of this items on public roads may be against local, state and/or federal/EU laws.

Note: No warranty on exhaust chrome plating blueing or discoloration. All EFI models must be remapped! Please ask your local dealer.



Thunderbike Aircleaners with Approval

3D CNC- machined aircleaners from Thunderbike in outstanding quality with Approval and all mounting parts. TC aircleaners fit not for TBW models!

Powerfilter Grand Classic

607923 For Twin Cam Models bicolor

Air Cleaner-to-Carburetor Adapters

Billet adapters permit effortless installation of air cleaner assemblies on various carburetors.

23441 Billet adapter for S&S Super 'E' or 'G' carburetors

23442 Billet adapter for Mikuni HS40 carburetors

23443 Billet adapter for Mikuni HSR42 carburetors

CATALOG "EDITION 47" PAGE 8.44



S&S Carburetor Kits

For Big Twin Models

Super E	Super G	Fit Information
45979	45978	Fits Twin Cam 88 models from 99-06 (except fuel injected)

CATALOG "EDITION 47" PAGE 8.11



Adjustable Enrichment Device by Kustom Tech

- For S&S Super E/G carburetor
- To match with the Kustom Tech throttle kit and pet-cock

890480 Lucky 7

890482 8 Ball

890481 Smooth

890483 Acorn

CATALOG "EDITION 47" PAGE 8.14

NEW OLD SCHOOL

MADE IN GERMANY



Xzotic Generator Style Cam Cover

Add a touch of nostalgia. Transforms your bike to look in a way of cool old school. Comes with slotted bolts for the fake mounting holes (M5 thread) and re-uses the OEM screws to mount the cam cover. Fits all Twin Cam engines 00-16.

- 02049** Generator Style Cam Cover
- 667666** Gasket, Cam Gear Cover, Paper with Bead, 99-17, All Twin Cam Models
- 660330** Gasket, Cam Cover, Micropore, 99-17, All Twin Cam Models
- 613215** Fits Twin Cam models from 99-16

Note: To install the CCE Generator Style Cam Cover, it is necessary to use a new cam cover gasket. Does not fit with all exhaust systems, please check before!

CATALOG "EDITION 47" PAGE 9.54

**CUSTOM
CHROME
EXCLUSIVE**



Xzotic Rocker Boxes for Evolution and Twin Cam Models

Add a touch of nostalgia. Transforms your bike to look like a Pan or Knuckle. Compatible with Original Equipment rocker components. Complete kits include front and rear rocker box assemblies, gaskets and hardware.

Chrome Pan-Style

- 02017** Chrome. Fits Twin Cam models from 99-17 (except Touring models)
- 02000** Chrome. Fits Evolution Big Twins from 84-99 (except FXR models)
- 02022** Chrome. Fits Evolution FXR and Dresser models from 84-00, and Evolution Sportster models from 86-17 (except Touring models with Magneti Marelli fuel injection)

Black Pan-Style

- 602097** Black. Fits Twin Cam models from 99-16 (except Touring models)
- 602095** Black. Fits Evolution Big Twins from 84-99 (except FXR models)
- 602096** Black. Fits Evolution FXR and Dresser models from 84-00, and Evolution Sportster models from 86-17 (except Touring models with Magneti Marelli fuel injection)
- 02001** 'D' rings and screws
- 02011** Pan cover gaskets (Pack of 2)

CATALOG "EDITION 47" PAGE 9.74



FMD *Billy Boy*

Primary Covers "Billy-Boy" for Softail, Dyna Evo & Twin Cam Models

The Billy Boy primary cover moves your bike back to the past with the super-cool & vintage "Steel Tin Style" appearance. For Softail, Dyna Evolution and Twin Cam models. Available in raw or in black finish. Softail 94-06 and Dyna models 94-05 need the starter bushing kit CCE # 655794 in addition. Raw versions come with a chromed Derby cover, black versions are all black!

618498 For Softail Evo and Twin Cam models 89-06, raw

618499 For Softail Evo and Twin Cam models 89-06, black

618500 For Dyna Evo and Twin Cam models 90-05 with mid-controls, raw

655750 For Dyna Evo and Twin Cam models 90-05 with mid-controls, black

CATALOG "EDITION 47" PAGE 12.18



BDL 8 mm 'Bolt-In' Belt Drive Kits

Engineered to handle the most brutal torque and horsepower demands. Requires no primary case modifications to install. Features a cylindrical-shaped, replaceable clutch dog capable of withstanding 1200 foot pounds of torque. BDL's steel hub design moves the clutch basket inward, eliminating unnecessary weight hanging from the mainshaft. Barnett Kevlar clutch provides 70% greater surface area than stock for maximum hook-up. Complete kit includes front and rear pulleys, clutch, and a sealed clutch hub bearing.

42520 Fits Softail and Dyna Glide models from 94-06

42518 Fits Softail models from 86-89

42672 Fits rubber-mount Big Twin models from 86-89

42521 Fits 4-speed Shovelhead models with chain rear drive from 70-E84

42674 Fits 4-speed Shovelhead models with belt rear drive from 80-E84

CATALOG "EDITION 47" PAGE 12.11



624061



624053



Baker Offset Sprockets, BIT 94-06

.250" Offset Sprockets

- 624051 19-tooth
- 624052 20-tooth
- 624053 21-tooth
- 624054 22-tooth
- 624055 23-tooth
- 624056 24-tooth

CATALOG "EDITION 47" PAGE 12.37



530ZVX Series Ultra Heavy-Duty Sealed O-Ring Chains by EK Chain

- Four-point pin riveting
- 10,560 lb. tensile strength
- Anti-kink solid bushings
- Solid reinforced rollers
- Factory packed with high-performance lube
- Extra strong x-style o-rings for superior sealing
- Clip-style master link included

530 x 120 Chain Size

- 081135 Gold
- 081145 Chrome
- 081155 Red
- 081165 Blue

CATALOG "EDITION 47" PAGE 12.56



Drilled Brake Rotors

- 420 stainless steel outer band bolted in aluminium center carrier
- Will not work with HD calipers
- Work only with 2 and 4 piston Kustom Tech caliper

Drilled Style -99

- 696062** 8,5", front left
696063 8,5", front right
890824 11,5", front left
890825 11,5", front right
890826 8,5", rear left
890827 8,5", rear right
890828 11,5", rear left
890829 11,5", rear right

Drilled Style 00-

- 890830** 8,5", front left
890831 8,5", front right
890832 11,5", front left
890833 11,5", front right
890834 8,5", rear left
890835 8,5", rear right
890836 11,5", rear left
890837 11,5", rear right



11,5"



8,5"



Chrome Caliper



Black Caliper



Drilled Sprocket Brake Kit by Kustom Tech

- One-Side brake caliper and rear sprocket
- 2 pistons Billet aluminium caliper with integrated bracket
- 51 tooth stainless steel sprocket
- Welding tap and all the hardware
- Fits on left or right side with 3/4" or 1" wheel axle

890503 Kit polished

890504 Kit black

Replacement parts

890505 Replacement 51 tooth stainless steel sprocket

890506 Replacement brake pad set

890507 Caliper rebuild kit

CATALOG "EDITION 47" PAGE 13.73



890503



Black Ops



Machine Ops



Chrome



CATALOG "EDITION 47" PAGE 13.80

PM Vintage Calipers

Performance Machine has brought our modern braking technology to one of the original calipers that put us on the map for American made HD braking systems back in the seventies. The new Vintage caliper gets its braking power from PM's proven 4-piston internals, but we've taken the styling cues from our original Dual Action Cast caliper. The reminiscent, CNC-machined fins give the caliper its vintage style while keeping the caliper cool and providing optimal braking power with no flex. The precision machined PM logo around the accent bolt and centrally located banjo are the finishing touches to a true classic.

Calipers ONLY to go along with rear/front brackets

- 607412** Chrome
- 607413** Black Ops
- 607414** Machine Ops

Additional caliper bolts

- 888462** Black caliper bolt only
- 888463** Blue caliper bolt only
- 888464** Chrome caliper bolt only
- 888465** Red caliper bolt only



TTS Wheels 40 Spokes

899563 3.5 x 16", single disc, black rim, Approval

CHECK CCE DEALER STORE





1150112

1150111

1150110



H.D.S. "Classic 240" Tires

These 16" tires combine classic styling with the latest in modern technology. Features the "Classic" 4-groove tread pattern designed specifically for Harley-Davidson applications. Kevlar belted to insure strength, durability and increased mileage. This load "C" tire is available in double whitewall, wide whitewall or blackwall. Fits MT 90-16 74H E-240 tube type front or rear wheels.

1150112 Front/Rear tire MT90-16 74H E-240DW TT
Double White Line

1150110 Front/Rear tire MT 90-16 74H E-240 TT

1150111 Front/Rear tire MT90-16 74H E-240 TT Single
White Line

CATALOG "EDITION 47" PAGE 13.66



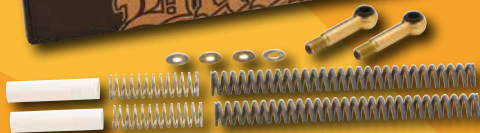
680131



680039



688967



'Slammer' Lowering Kits by Burly

- Complete lowering kit in one box
- Easy to install, fork springs DO NOT require complete disassembly of forks!
- Custom short rear shocks lower rear up to 2.5"
- Drop thru in fork springs lower front end up to 2"

Fits Touring Models

680042 Fits 80-13 Touring models, Chrome

Fits Softail Models

688968 Fits 00-17 Softail models (except FXCW /C Models), Chrome

688967 Fits 84-99 Softail models, Chrome

Fits Dyna Models

680041 Fits 06-17 Dyna models, Chrome

690200 Fits 06-17 Dyna models, Black

680040 Fits 91-05 Dyna models, Chrome

Fits Sportster Models

680039 Fits 04-15 Sportster models, Chrome

680131 Fits 04-15 Sportster models, Black

680038 Fits 88-03 Sportster models, Chrome



Ness Retro Fork Boots

- Classic retro styling for your 86-12 FLHT/FLTR and FL Softail models
- Replaces the OEM lower fork leg covers
- Reminiscent of those early 'Gator' rubber fork boots
- Machined from 6061-T6 billet aluminum
- Outstanding quality and finish offered in chrome, black anodized & black anodized with diamond cut edges

Chrome

- 631085** Fits 86-13 FLT, FLHR, FLST & 90-06 FLSTF models
- 631087** Fits 86-13 FLHT & 06-13 FLHX models
- 550014** Fits 86- FLST/N/F (not 07 models)
- 550019** Fits 14-17 FLT models

Black Anodized

- 631086** Fits 86-13 FLT, FLHR, FLST & 90-06 FLSTF models
- 631088** Fits 86-13 FLHT & 06-13 FLHX models
- 550015** Fits 86- FLST/N/F (not 07 models)
- 550020** Fits 14-17 FLT models

Black Anodized with Diamond Cut Edges

- 631089** Fits 86-13 FLT, FLHR, FLST & 90-06 FLSTF models
- 631090** Fits 86-13 FLHT & 06-13 FLHX models
- 550016** Fits 86- FLST/N/F (not 07 models)
- 550021** Fits 14-17 FLT models

631990

CUSTOM
CHROME
EXCLUSIVE



631991



SANTEE

Custom Oil Tanks for Twin Cam 88 Softail Models

These oil tanks are a perfect way to give your new Softail an 'old school' look. Chromed steel construction with built-in battery box. There are two styles to choose from, and they fit all Softail models from 00-06. Oil fittings not included.

631990 'Round'

631991 'Domed'

CATALOG "EDITION 47" PAGE 16.95



Arlen Ness Ratchet Gas Caps

- Available in vented, non-vented
- Several styles with black or chrome finish
- Machined from billet aluminum in the USA
- All gas caps sold individually
- Many matching accessories are available
- Cap can be ratchet clockwise to the riders preferred design alignment

Vented Gas Caps

550106 Beveled gas cap 97-17, black

550107 Beveled gas cap 97-17, chrome

Non Vented Gas Caps

550114 Beveled gas cap 97-17, black

550115 Beveled gas cap 97-17, chrome

- These dummy Gas Caps fit tanks originally equipped with factory dummy Gas Cap with fuel gauge
- LED light is user-programmable to light LED at any pre-set fuel level to help ensure you don't run out of gas

550122 Beveled with LED gauge, black

550123 Beveled with LED gauge, chrome

CATALOG "EDITION 47" PAGE 16.83



Beveled





**LOWBROW
CUSTOMS**
Where the action is!

Stingray Fenders by Lowbrow

The raised center rib, flared duckbill classic style at its best.

- Available in 4-3/4" and 6" widths, in your choice of raw steel or aluminum.
- Radius fits 18" tires as well as vintage-style 16" tires.

Steel version

655846 4-3/4"

655844 6"

895112 7"

CATALOG "EDITION 47" PAGE 16.38

motogadget

Motosign Mini

It is an extremely small indicator light unit featuring 5 coloured LEDs. The device is very suitable for the motoscope mini. Length / width / depth: 46 mm, 8 mm, 13 mm; length of the connecting cable is approx. 50 cm; two threaded fastening bores (M3); weight with cable is approx. 18 grams; The device is already equipped with integrated multiplier resistors.

LED colors:

- 2 x green (indicators left/right or 1 x indicators/ 1 x warning light)
- 1 x green (idle gear)
- 1 x blue (high beam)
- 1 x red (warning light)

681477 Motosign Mini black

681478 Motosign-Mini polished



CATALOG "EDITION 47" PAGE 17.08

HOLLISTER



World's Finest Products For Harley-Davidsons

Custom Chrome Europe GmbH
Carl-von-Ossietzky-Straße 8
55459 Grolsheim/Germany

Phone: +49 (0) 6721 - 4 007 - 0

Fax: +49 (0) 6721 - 4 007 - 100

e-mail: info@customchrome.de
www.custom-chrome-europe.com

Managing Director: Thomas Noetzel · Mainz Local Court
Commercial Registry No. 45562 · VAT No. DE811309246